

Product datasheet for **MG200747**

Ndufa6 (NM_025987) Mouse Tagged ORF Clone

Product data:

Product Type: Expression Plasmids
Product Name: Ndufa6 (NM_025987) Mouse Tagged ORF Clone
Tag: TurboGFP
Symbol: Ndufa6
Synonyms: 14kDa; 2700038D15Rik; B230217P19Rik
Mammalian Cell Selection: Neomycin
Vector: pCMV6-AC-GFP (PS100010)
E. coli Selection: Ampicillin (100 ug/mL)
ORF Nucleotide Sequence: >MG200747 representing NM_025987
Red=Cloning site Blue=ORF Green=Tags(s)

TTTTGTAATACGACTCACTATAGGGCGGCCGGAATTCGTCGACTGGATCCGGTACCGAGGAGATCTGCC
GCC**CGGATCGCC**

ATGGCGGCCGGCCACCGCCTGCGCCAAGCTGCTGCTGCGGCAGCCAGTACCTCGGTGAAGCCCATTT
TCAGTCGCGACCTGAACGAGGCCAAGCGGAGGGTGCAGGAGCTCTACCGCGTTGGTATCGGGAGGTGCC
GAACACCGTGCACCTAATGCAGCTGGATATCACGGTGAACAAGGACGGGATAAAGTCCGAGAAATGTTC
ATGAAGAATGCCCATGTACAGACCCCAGAGTGGTTGATCTGCTGGTCATTAAGGGAAAGATGGAGCTCC
AGGAAACCATCAAAGTATGGAAGCAGCGGACACACGTTATGCGGTTTTCCATGAAACAGAAACACCAAG
GCCAAAGGATTTCTTATCTAAGTTCTATATGGGCCATGACCCA

ACGCGTACGCGGCCGCTCGAG - GFP Tag - GTTTAA

Protein Sequence: >MG200747 representing NM_025987
Red=Cloning site Green=Tags(s)
MAAAATGLRQAAAAAASVVKPIFSRDLEAKRRVRELYRAWYREVPNTVHLMQLDITVKQRDKVREMF
MKNAHVTDPRVVDLLVIKGMELQETIKVWKQRTHVMRFFHETETPRPKDFLSKFYMGHDP

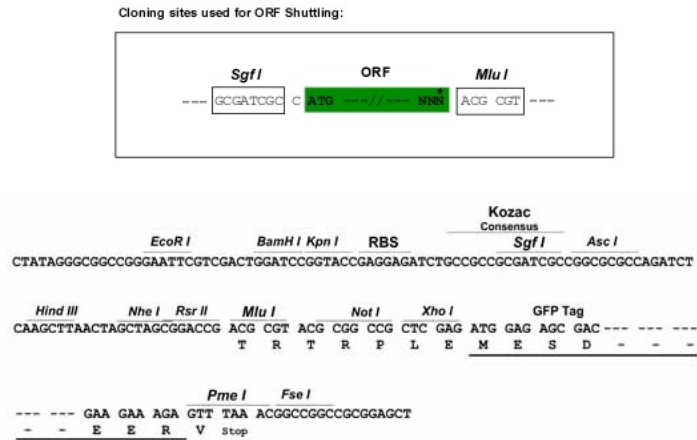
TRTRPLE - GFP Tag - V

Restriction Sites: Sgfl-MluI

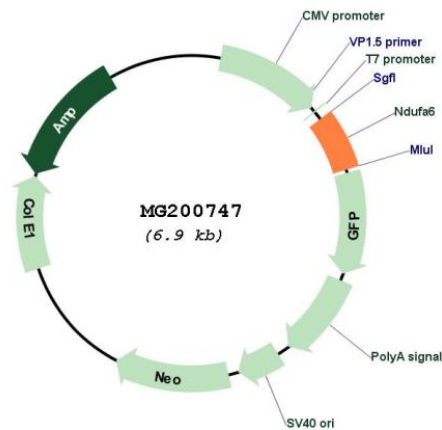


[View online »](#)

Cloning Scheme:



Plasmid Map:



ACCN: NM_025987

ORF Size: 393 bp

OTI Disclaimer: The molecular sequence of this clone aligns with the gene accession number as a point of reference only. However, individual transcript sequences of the same gene can differ through naturally occurring variations (e.g. polymorphisms), each with its own valid existence. This clone is substantially in agreement with the reference, but a complete review of all prevailing variants is recommended prior to use. [More info](#)

OTI Annotation:	This clone was engineered to express the complete ORF with an expression tag. Expression varies depending on the nature of the gene.
Components:	The ORF clone is ion-exchange column purified and shipped in a 2D barcoded Matrix tube containing 10ug of transfection-ready, dried plasmid DNA (reconstitute with 100 ul of water).
Reconstitution Method:	<ol style="list-style-type: none">1. Centrifuge at 5,000xg for 5min.2. Carefully open the tube and add 100ul of sterile water to dissolve the DNA.3. Close the tube and incubate for 10 minutes at room temperature.4. Briefly vortex the tube and then do a quick spin (less than 5000xg) to concentrate the liquid at the bottom.5. Store the suspended plasmid at -20°C. The DNA is stable for at least one year from date of shipping when stored at -20°C.
RefSeq:	<u>NM_025987.3</u> , <u>NP_080263.1</u>
RefSeq Size:	560 bp
RefSeq ORF:	396 bp
Locus ID:	67130
UniProt ID:	<u>Q9CQZ5</u>
Cytogenetics:	15 E1
Gene Summary:	Accessory subunit of the mitochondrial membrane respiratory chain NADH dehydrogenase (Complex I), that is believed to be not involved in catalysis. Required for proper complex I assembly. Complex I functions in the transfer of electrons from NADH to the respiratory chain. The immediate electron acceptor for the enzyme is believed to be ubiquinone. [UniProtKB/Swiss-Prot Function]