

## Product datasheet for **MG200723**

### Fshb (NM\_008045) Mouse Tagged ORF Clone

#### Product data:

**Product Type:** Expression Plasmids  
**Product Name:** Fshb (NM\_008045) Mouse Tagged ORF Clone  
**Tag:** TurboGFP  
**Symbol:** Fshb  
**Synonyms:** FS; FSH; FSH-B; FSH-beta; Fshbe; Fshbeta  
**Mammalian Cell Selection:** Neomycin  
**Vector:** pCMV6-AC-GFP (PS100010)  
**E. coli Selection:** Ampicillin (100 ug/mL)  
**ORF Nucleotide Sequence:** >MG200723 representing NM\_008045  
Red=Cloning site Blue=ORF Green=Tags(s)

TTTTGTAATACGACTCACTATAGGGCGGCCGGAATTCGTCGACTGGATCCGGTACCGAGGAGATCTGCC  
GCC**CGATCGCC**

ATGATGAAGTTGATCCAGCTTTGCATCTTATTCTGGTGTGGAGAGCAATCTGCTGCCATAGCTGTGAAT  
TGACCAACATCACCATCTCAGTAGAGAAGGAAGAGTGCCGTTTCTGCATAAGCATCAATACCACTTGGTG  
TGCGGGCTACTGCTACACTAGGGATCTGGTGTATAAGGACCCAGCTCGGCCCAATACCCAGAAAGTATGT  
ACCTTCAAGGAGCTGGTATACGAGACCGTAAGATTGCCTGGCTGTGCCCGCCACTCAGACTCCCTCTACA  
CATATCCAGTAGCCACTGAATGTCACTGTGGCAAGTGTGACAGCGACAGCACTGACTGCACCGTGAGGGG  
CCTAGGACCCAGCTACTGCTCCTCAGTAAATGAAGGAA

**ACGCGT**ACGCGGCCGCTCGAG - GFP Tag - GTTTAA

**Protein Sequence:** >MG200723 representing NM\_008045  
Red=Cloning site Green=Tags(s)  
MMKLIQLCILFWCWRRAICHSCELTNITISVEKEECRFCSINTTWCAGYCYTRDLVYKDPARPNTQKVC  
TFKELYETVRLPGCARHSDSLYTPVATECHCGKCDSDSTDCTVRGLGPSYCSFSEMKE

**TRTRPLE** - GFP Tag - V

**Chromatograms:** [https://cdn.origene.com/chromatograms/ja1901\\_g01.zip](https://cdn.origene.com/chromatograms/ja1901_g01.zip)

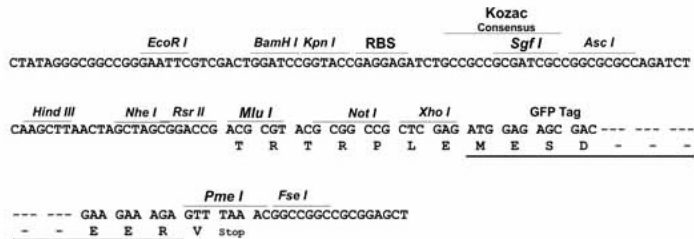
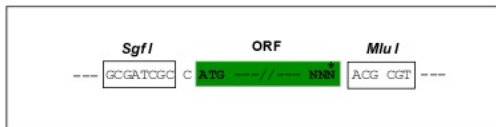
**Restriction Sites:** SgfI-MluI



[View online »](#)

Cloning Scheme:

Cloning sites used for ORF Shutting:



ACCN: NM\_008045

ORF Size: 390 bp

**OTI Disclaimer:** Due to the inherent nature of this plasmid, standard methods to replicate additional amounts of DNA in E. coli are highly likely to result in mutations and/or rearrangements. Therefore, OriGene does not guarantee the capability to replicate this plasmid DNA. Additional amounts of DNA can be purchased from OriGene with batch-specific, full-sequence verification at a reduced cost. Please contact our customer care team at [custsupport@origene.com](mailto:custsupport@origene.com) or by calling 301.340.3188 option 3 for pricing and delivery.

The molecular sequence of this clone aligns with the gene accession number as a point of reference only. However, individual transcript sequences of the same gene can differ through naturally occurring variations (e.g. polymorphisms), each with its own valid existence. This clone is substantially in agreement with the reference, but a complete review of all prevailing variants is recommended prior to use. [More info](#)

**OTI Annotation:** This clone was engineered to express the complete ORF with an expression tag. Expression varies depending on the nature of the gene.

**Components:** The ORF clone is ion-exchange column purified and shipped in a 2D barcoded Matrix tube containing 10ug of transfection-ready, dried plasmid DNA (reconstitute with 100 ul of water).

**Reconstitution Method:**

1. Centrifuge at 5,000xg for 5min.
2. Carefully open the tube and add 100ul of sterile water to dissolve the DNA.
3. Close the tube and incubate for 10 minutes at room temperature.
4. Briefly vortex the tube and then do a quick spin (less than 5000xg) to concentrate the liquid at the bottom.
5. Store the suspended plasmid at -20°C. The DNA is stable for at least one year from date of shipping when stored at -20°C.

**RefSeq:** [NM\\_008045.3](#)

**RefSeq Size:** 1622 bp

**RefSeq ORF:** 393 bp

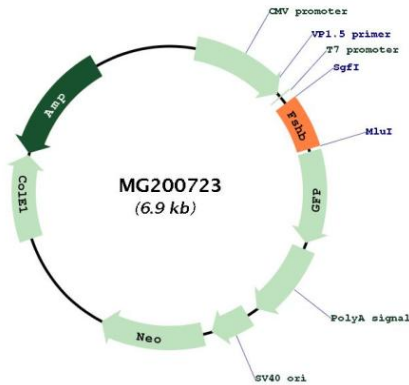
**Locus ID:** 14308

**UniProt ID:** [Q60687](#)

**Cytogenetics:** 2 56.02 cM

**Gene Summary:** The pituitary glycoprotein hormone family includes follicle-stimulating hormone, luteinizing hormone, chorionic gonadotropin, and thyroid-stimulating hormone. All of these glycoproteins consist of an identical alpha subunit and a hormone-specific beta subunit. This gene encodes the beta subunit of follicle-stimulating hormone. In conjunction with luteinizing hormone, follicle-stimulating hormone induces egg and sperm production. [provided by RefSeq, Aug 2015]

**Product images:**



Circular map for MG200723