

Product datasheet for **MG200701**

Cxcl17 (NM_153576) Mouse Tagged ORF Clone

Product data:

Product Type: Expression Plasmids
Product Name: Cxcl17 (NM_153576) Mouse Tagged ORF Clone
Tag: TurboGFP
Symbol: Cxcl17
Synonyms: VCC-1; Vcc1
Mammalian Cell Selection: Neomycin
Vector: pCMV6-AC-GFP (PS100010)
E. coli Selection: Ampicillin (100 ug/mL)
ORF Nucleotide Sequence: >MG200701 representing NM_153576
Red=Cloning site Blue=ORF Green=Tags(s)

TTTTGTAATACGACTCACTATAGGGCGGCCGGAATTCGTCGACTGGATCCGGTACCGAGGAGATCTGCC
GCC**CGGATCGCC**

ATGAAGCTTCTAGCCTCTCCCTTCTTCTGTTGCTTCCAGTGATGCTCATGTCCATGGTCTTCAGCAGCC
CGAACCCAGGGGTCGCCAGAAGCCACGGGGACCAACACCTGGCTCCTAGGAGGTGGCTCTTGAAGGTGG
CCAAGAATGTGAATGCAAAGATTGGTTCTGCAAGCCCCAAAGAGAAAAGCCACAGCAGTGTGGGGCCA
CCAAGGAAGCAGTGTCCCTGTGATCACGTCAAGGGCAGGGAGAAAAAACAGACACCAAAGCACCAC
AGGAAGTCGCAAAGACCCTCCAGAGCCTGCCAGCAATTTCTCAAACGATGTCACCTGGCAAGCTTTGCGC
TGCCCTTATAGTACTGAGACTCTGCTCCTCTAGT

ACGCGTACGCGGCCGCTCGAG - GFP Tag - GTTTAA

Protein Sequence: >MG200701 representing NM_153576
Red=Cloning site Green=Tags(s)

MKLLASPFLLLLPVMLMSVMVFSSPNPGVARSHGDQHLAPRRWLEGGQECECKDWFLLQAPKRKATAVLGP
PRKQPCDHVKGREKKKQTPKAPQEVAKTLQSLPAISQTMSPGKLCALIVLRLCSSS

TRTRPLE - GFP Tag - V

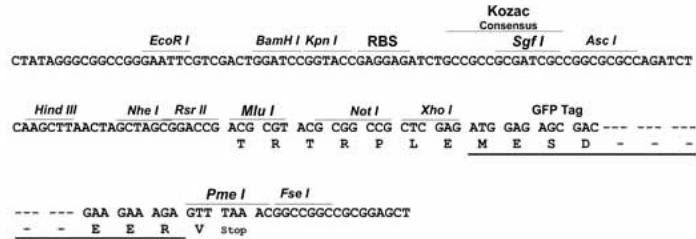
Restriction Sites: Sgfl-MluI



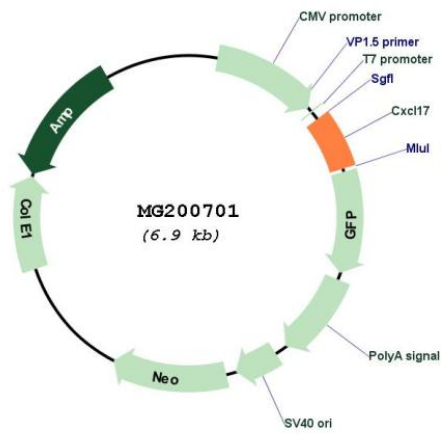
[View online »](#)

Cloning Scheme:

Cloning sites used for ORF Shutting:



Plasmid Map:



ACCN: NM_153576
 ORF Size: 357 bp

OTI Disclaimer: Due to the inherent nature of this plasmid, standard methods to replicate additional amounts of DNA in E. coli are highly likely to result in mutations and/or rearrangements. Therefore, OriGene does not guarantee the capability to replicate this plasmid DNA. Additional amounts of DNA can be purchased from OriGene with batch-specific, full-sequence verification at a reduced cost. Please contact our customer care team at custsupport@origene.com or by calling 301.340.3188 option 3 for pricing and delivery.

The molecular sequence of this clone aligns with the gene accession number as a point of reference only. However, individual transcript sequences of the same gene can differ through naturally occurring variations (e.g. polymorphisms), each with its own valid existence. This clone is substantially in agreement with the reference, but a complete review of all prevailing variants is recommended prior to use. [More info](#)

OTI Annotation: This clone was engineered to express the complete ORF with an expression tag. Expression varies depending on the nature of the gene.

Components: The ORF clone is ion-exchange column purified and shipped in a 2D barcoded Matrix tube containing 10ug of transfection-ready, dried plasmid DNA (reconstitute with 100 ul of water).

Reconstitution Method:

1. Centrifuge at 5,000xg for 5min.
2. Carefully open the tube and add 100ul of sterile water to dissolve the DNA.
3. Close the tube and incubate for 10 minutes at room temperature.
4. Briefly vortex the tube and then do a quick spin (less than 5000xg) to concentrate the liquid at the bottom.
5. Store the suspended plasmid at -20°C. The DNA is stable for at least one year from date of shipping when stored at -20°C.

RefSeq: [NM_153576.1](#)

RefSeq Size: 760 bp

RefSeq ORF: 360 bp

Locus ID: 232983

UniProt ID: [Q5UW37](#)

Cytogenetics: 7 A3

Gene Summary: Chemokine that acts as chemoattractant for monocytes, macrophages and dendritic cells (PubMed:24973458). Plays a role in angiogenesis and possibly in the development of tumors (PubMed:16989774). Acts as an anti-inflammatory in the stomach. May play a role in the innate defense against infections. Activates the C-X-C chemokine receptor GPR35 to induce a rapid and transient rise in the level of intracellular calcium ions.[UniProtKB/Swiss-Prot Function]