

Product datasheet for **MG200686**

Polr2f (NM_027231) Mouse Tagged ORF Clone

Product data:

Product Type: Expression Plasmids
Product Name: Polr2f (NM_027231) Mouse Tagged ORF Clone
Tag: TurboGFP
Symbol: Polr2f
Synonyms: 1810060D16Rik; RPB6
Mammalian Cell Selection: Neomycin
Vector: pCMV6-AC-GFP (PS100010)
E. coli Selection: Ampicillin (100 ug/mL)
ORF Nucleotide Sequence: >MG200686 representing NM_027231
 Red=Cloning site Blue=ORF Green=Tags(s)

TTTTGTAATACGACTCACTATAGGGCGCCGGGAATTCGTCGACTGGATCCGGTACCGAGGAGATCTGCC
 GCC**CGATCGCC**

ATGTCAGACAACGAGGACAATTCGACGGCGACGACTTTGATGACGTTGAGGAGGACGAAGGACTTGACG
 ACTTGAAAAATGCTGAGGAGGAGGGCCAGGAAAATGTCGAGATTCTCCATCTGGTGAGCGACCACAGGC
 CAACCAGAAGCGGATCACCCTTACATGACCAAGTATGAGCGTGCCCGAGTCTGGGACCCGGGCT
 CTTGATCGCGATGTGTGCCCGGTGATGGTGGAGCTGGAGGGGAGACAGACCCTTTGCTCATCGCCA
 TGAAGGAACAAGGCGCGGAAGATCCCATCATCATTGCGCGGTACCTGCCAGACGGCAGCTATGAGGA
 CTGGGGCGTGGACGAGCTTATCATCAGCGAC

ACGCGTACGCGGCCGCTCGAG - GFP Tag - GTTTAA

Protein Sequence: >MG200686 representing NM_027231
 Red=Cloning site Green=Tags(s)

MSDNEDNFDGDDFDDVEEDEGLDDLENAEEEGQENVEILPSGERPQANQKRITTPYMTKYERARVLGTRA
 LQIAMCAPVMVELEGETDPLLIAMKELKARKIPIIIRRYLPDGSYEDWGVDELIISD

TRTRPLE - GFP Tag - V

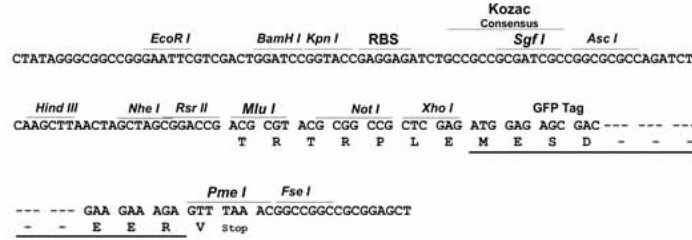
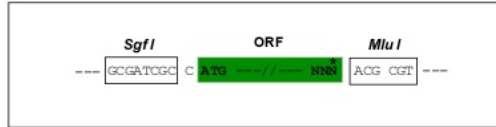
Restriction Sites: Sgfl-MluI



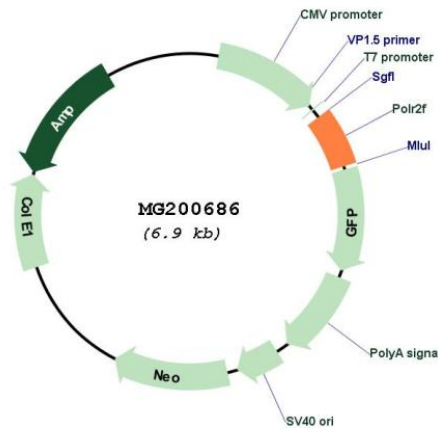
[View online »](#)

Cloning Scheme:

Cloning sites used for ORF Shuttling:



Plasmid Map:



ACCN: NM_027231

ORF Size: 381 bp

OTI Disclaimer: The molecular sequence of this clone aligns with the gene accession number as a point of reference only. However, individual transcript sequences of the same gene can differ through naturally occurring variations (e.g. polymorphisms), each with its own valid existence. This clone is substantially in agreement with the reference, but a complete review of all prevailing variants is recommended prior to use. [More info](#)

OTI Annotation:	This clone was engineered to express the complete ORF with an expression tag. Expression varies depending on the nature of the gene.
Components:	The ORF clone is ion-exchange column purified and shipped in a 2D barcoded Matrix tube containing 10ug of transfection-ready, dried plasmid DNA (reconstitute with 100 ul of water).
Reconstitution Method:	<ol style="list-style-type: none">1. Centrifuge at 5,000xg for 5min.2. Carefully open the tube and add 100ul of sterile water to dissolve the DNA.3. Close the tube and incubate for 10 minutes at room temperature.4. Briefly vortex the tube and then do a quick spin (less than 5000xg) to concentrate the liquid at the bottom.5. Store the suspended plasmid at -20°C. The DNA is stable for at least one year from date of shipping when stored at -20°C.
RefSeq:	<u>NM_027231.1</u> , <u>NP_081507.1</u>
RefSeq Size:	612 bp
RefSeq ORF:	384 bp
Locus ID:	69833
UniProt ID:	<u>P61219</u>
Cytogenetics:	15 37.7 cM
Gene Summary:	DNA-dependent RNA polymerases catalyze the transcription of DNA into RNA using the four ribonucleoside triphosphates as substrates. Common component of RNA polymerases I, II and III which synthesize ribosomal RNA precursors, mRNA precursors and many functional non-coding RNAs, and small RNAs, such as 5S rRNA and tRNAs, respectively. Pol II is the central component of the basal RNA polymerase II transcription machinery. Pols are composed of mobile elements that move relative to each other. In Pol II, POLR2F/RPB6 is part of the clamp element and together with parts of RPB1 and RPB2 forms a pocket to which the RPB4-RPB7 subcomplex binds (By similarity).[UniProtKB/Swiss-Prot Function]