

## Product datasheet for **MG200650**

### Polr2i (NM\_027259) Mouse Tagged ORF Clone

#### Product data:

**Product Type:** Expression Plasmids  
**Product Name:** Polr2i (NM\_027259) Mouse Tagged ORF Clone  
**Tag:** TurboGFP  
**Symbol:** Polr2i  
**Synonyms:** 2810002B19Rik  
**Mammalian Cell Selection:** Neomycin  
**Vector:** pCMV6-AC-GFP (PS100010)  
**E. coli Selection:** Ampicillin (100 ug/mL)  
**ORF Nucleotide Sequence:** >MG200650 representing NM\_027259  
Red=Cloning site Blue=ORF Green=Tags(s)

TTTTGTAATACGACTCACTATAGGGCGCCGGGAATTCGTCGACTGGATCCGGTACCGAGGAGATCTGCC  
GCC**CGGATCGCC**

ATGGAACCCGACGGGACGTACGAGCCTGGCTTCGTGGGTATTCGGTTCTGCCAGGAATGTAATAACATGC  
TGTACCCCAAGGAGGACAAGGAAAATCGCATTCTGCTGTACGCGTGCCGGAATTGCGATTACCAGCAGGA  
AGCCGACAACAGCTGCATCTACGTCAACAAAATCACGCACGAAGTGACGAGCTGACCCAGATCATCGCA  
GACGTGTCCAGGACCCACGTTGCCCGGACGGAGGACCACCCGTGCCAGAAGTGTGCCACAAGGAGG  
CAGTGTCTTTTCAGTACACAGTGCCCGAGCTGAGGACGCCATGCGCCTGTACTATGTTTGCCTGCCCC  
ACACTGCGGCCACCGCTGGACTGAG

AG**CGGACCG**ACGCGTACGCGGCCGCTCGAG - GFP Tag - GTTTAA

**Protein Sequence:** >MG200650 representing NM\_027259  
Red=Cloning site Green=Tags(s)

MEPDGTYEPGFVGI RFCQECNNMLYPKEDKENRILLYACRNCDYQEQEADNSCIYV NKITHEVDEL TQIIA  
DVSQDPTLPRTE DHPCQKCGHKEAVFFQSHSARAEDAMRLYYVCTAPHCGHRWTE

SGP**TRRRLE** - GFP Tag - V

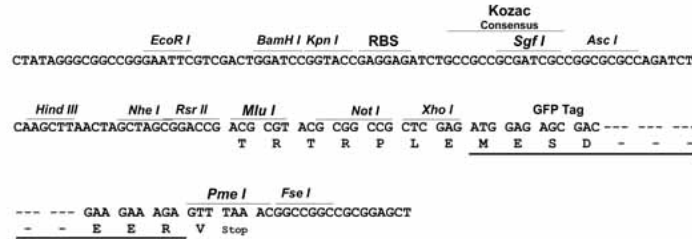
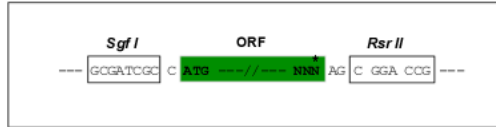
**Restriction Sites:** Sgfl-RsrII



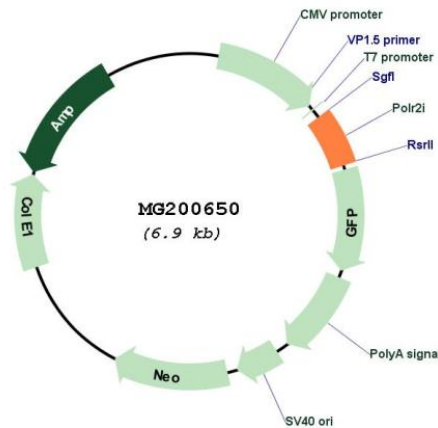
[View online »](#)

Cloning Scheme:

Cloning sites used for ORF Shuttling:



Plasmid Map:



ACCN: NM\_027259

ORF Size: 375 bp

OTI Disclaimer: The molecular sequence of this clone aligns with the gene accession number as a point of reference only. However, individual transcript sequences of the same gene can differ through naturally occurring variations (e.g. polymorphisms), each with its own valid existence. This clone is substantially in agreement with the reference, but a complete review of all prevailing variants is recommended prior to use. [More info](#)

<b>OTI Annotation:</b>	This clone was engineered to express the complete ORF with an expression tag. Expression varies depending on the nature of the gene.
<b>Components:</b>	The ORF clone is ion-exchange column purified and shipped in a 2D barcoded Matrix tube containing 10ug of transfection-ready, dried plasmid DNA (reconstitute with 100 ul of water).
<b>Reconstitution Method:</b>	<ol style="list-style-type: none"><li>1. Centrifuge at 5,000xg for 5min.</li><li>2. Carefully open the tube and add 100ul of sterile water to dissolve the DNA.</li><li>3. Close the tube and incubate for 10 minutes at room temperature.</li><li>4. Briefly vortex the tube and then do a quick spin (less than 5000xg) to concentrate the liquid at the bottom.</li><li>5. Store the suspended plasmid at -20°C. The DNA is stable for at least one year from date of shipping when stored at -20°C.</li></ol>
<b>RefSeq:</b>	<a href="#">NM_027259.1</a> , <a href="#">NP_081535.1</a>
<b>RefSeq Size:</b>	707 bp
<b>RefSeq ORF:</b>	378 bp
<b>Locus ID:</b>	69920
<b>UniProt ID:</b>	<a href="#">P60898</a>
<b>Cytogenetics:</b>	7 B1
<b>Gene Summary:</b>	DNA-dependent RNA polymerase catalyzes the transcription of DNA into RNA using the four ribonucleoside triphosphates as substrates. Component of RNA polymerase II which synthesizes mRNA precursors and many functional non-coding RNAs. Pol II is the central component of the basal RNA polymerase II transcription machinery. It is composed of mobile elements that move relative to each other. RPB9 is part of the upper jaw surrounding the central large cleft and thought to grab the incoming DNA template (By similarity). [UniProtKB/Swiss-Prot Function]