

## Product datasheet for **MG200619**

### Tex12 (BC048458) Mouse Tagged ORF Clone

#### Product data:

**Product Type:** Expression Plasmids  
**Product Name:** Tex12 (BC048458) Mouse Tagged ORF Clone  
**Tag:** TurboGFP  
**Symbol:** Tex12  
**Synonyms:** 5730518K06Rik  
**Mammalian Cell Selection:** Neomycin  
**Vector:** pCMV6-AC-GFP (PS100010)  
**E. coli Selection:** Ampicillin (100 ug/mL)  
**ORF Nucleotide Sequence:** >MG200619 representing BC048458  
 Red=Cloning site Blue=ORF Green=Tags(s)

TTTGTAAATACGACTCACTATAGGGCGGCCGGAATTCGTCGACTGGATCCGGTACCGAGGAGATCTGCC  
 GCC**CGATCGCC**

ATGATGGCAAACACCTTGTAACCCGACTCTAGAACTGCAAGAGGGCAAGAGAATTGGAGCCTCAGG  
 TGTCTGATAGTCCACAGGTATCTCTCTTGAAAATCAGAGTCATCTCTCTGAGGCTTCTGGACTCTT  
 TTATAAGAGGAAGCTCTGGAGAAGGATTTGAGCGATATGAGCAAGGAAATTAATCTGATGTTGTCTACA  
 TATGCAAAGATTTTAAGTGAAAGAGCAGCAGTAGATGCATCTTACATCGATGAGATAGATGGACTCTTCA  
 AAGAAGCCAATATTATTGAAAACCTTCTAGTACAAAAAGAGAGTTCTGAAGCAGAGGTTACAGTAAT  
 TACCAACACCCTACACAAG

**ACGCGT**ACGCGGCCGCTCGAG - GFP Tag - GTTTAA

**Protein Sequence:** >MG200619 representing BC048458  
 Red=Cloning site Green=Tags(s)

MMANHLVKPDSRNCKRARELEPQVSDSPQVSSLGKSESSLSEASGLFYKEEALEKDLSDMSKEINLMLST  
 YAKILSERAAYDASYIDEIDGLFKEANIENFLVQKREFLKQRFVTITNTLHK

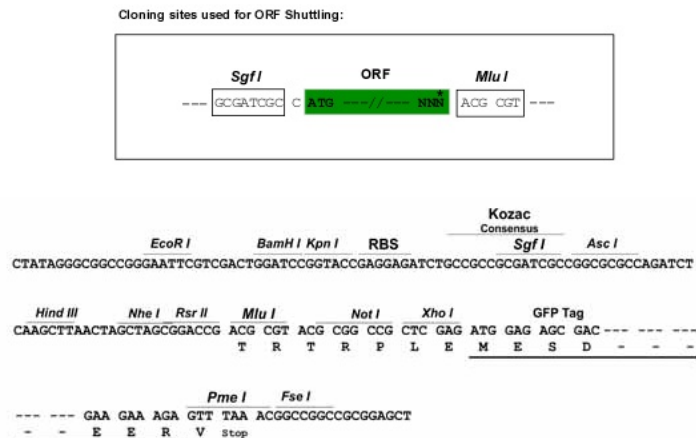
**TRTRPLE** - GFP Tag - V

**Restriction Sites:** Sgfl-MluI



[View online »](#)

## Cloning Scheme:



ACCN: BC048458

ORF Size: 369 bp

OTI Disclaimer: The molecular sequence of this clone aligns with the gene accession number as a point of reference only. However, individual transcript sequences of the same gene can differ through naturally occurring variations (e.g. polymorphisms), each with its own valid existence. This clone is substantially in agreement with the reference, but a complete review of all prevailing variants is recommended prior to use. [More info](#)

OTI Annotation: This clone was engineered to express the complete ORF with an expression tag. Expression varies depending on the nature of the gene.

Components: The ORF clone is ion-exchange column purified and shipped in a 2D barcoded Matrix tube containing 10ug of transfection-ready, dried plasmid DNA (reconstitute with 100 ul of water).

Reconstitution Method:

1. Centrifuge at 5,000xg for 5min.
2. Carefully open the tube and add 100ul of sterile water to dissolve the DNA.
3. Close the tube and incubate for 10 minutes at room temperature.
4. Briefly vortex the tube and then do a quick spin (less than 5000xg) to concentrate the liquid at the bottom.
5. Store the suspended plasmid at -20°C. The DNA is stable for at least one year from date of shipping when stored at -20°C.

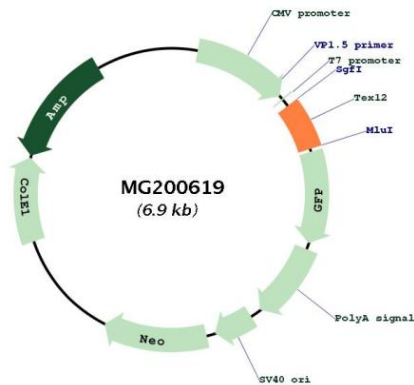
Note: Plasmids are not sterile. For experiments where strict sterility is required, filtration with 0.22um filter is required.

RefSeq: [BC048458](#), [AAH48458](#)

RefSeq Size: 647 bp

RefSeq ORF:	371 bp
Locus ID:	66654
Cytogenetics:	9 A5.3
Gene Summary:	Component of the transverse central element of synaptonemal complexes (SCS), formed between homologous chromosomes during meiotic prophase (PubMed:16968740). Requires SYCP1 in order to be incorporated into the central element (PubMed:16968740). [UniProtKB/Swiss-Prot Function]

## Product images:



Circular map for MG200619