

## Product datasheet for **MG200540**

### Mtpn (NM\_008098) Mouse Tagged ORF Clone

#### Product data:

**Product Type:** Expression Plasmids  
**Tag:** TurboGFP  
**Symbol:** Mtpn  
**Synonyms:** 5033418D15Rik; Gcdp; VI  
**Mammalian Cell Selection:** Neomycin  
**Vector:** pCMV6-AC-GFP (PS100010)  
**E. coli Selection:** Ampicillin (100 ug/mL)

**ORF Nucleotide Sequence:** >MG200540 representing NM\_008098  
Red=Cloning site Blue=ORF Green=Tags(s)

TTTTGTAATACGACTCACTATAGGGCGCCGGGAATTCGTCGACTGGATCCGGTACCGAGGAGATCTGCC  
GCCGCGATCGCC

ATGTGCGACAAGGAGTTCATGTGGGCCCTGAAAAACGGAGACTTGGATGAGGTGAAGGACTATGTGGCTA  
AGGGAGAAGATGTCAACCGGACACTAGAGGGTGAAGGAAGCCTTTCATTATGCTGCAGATTGTGGACA  
GCTTGAATCCTGGAATTTCTGCTGCTGAAAGGAGCAGATATTAATGCTCCAGATAAACATCATATTACC  
CCTCTTCTGCTGCTGTCTATGAGGGTCATGTTTCTGCGTGAAATTGCTTCTGTCAAAGGGTCTGATA  
AGACTGTGAAAGGCCAGATGGACTGACCGCCCTTGAAGCCACTGACAACCAGGCAATCAAAGCTCTTCT  
CCAG

ACGCGTACGCGGCCGCTCGAG - GFP Tag - GTTTAA

**Protein Sequence:** >MG200540 representing NM\_008098  
Red=Cloning site Green=Tags(s)

MCDKEFMWALKNGDLDEVKDYVAKGEDVNRTLGGGRKPLHYAADCGQLEIFLLKGDINAPDKHHIT  
PLLSAVYEGHVSCVKKLLLSKGADKTVKGPDGLTALEATDNQAIKALLQ

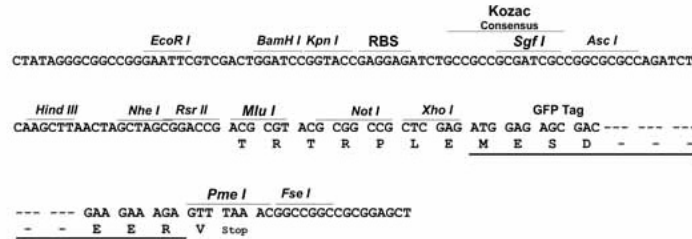
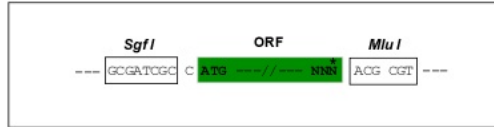
TRTRPLE - GFP Tag - V

**Restriction Sites:** SgfI-MluI



**Cloning Scheme:**

Cloning sites used for ORF Shutting:


**ACCN:** NM\_008098

**ORF Size:** 354 bp

**OTI Disclaimer:** The molecular sequence of this clone aligns with the gene accession number as a point of reference only. However, individual transcript sequences of the same gene can differ through naturally occurring variations (e.g. polymorphisms), each with its own valid existence. This clone is substantially in agreement with the reference, but a complete review of all prevailing variants is recommended prior to use. [More info](#)

**OTI Annotation:** This clone was engineered to express the complete ORF with an expression tag. Expression varies depending on the nature of the gene.

**Components:** The ORF clone is ion-exchange column purified and shipped in a 2D barcoded Matrix tube containing 10ug of transfection-ready, dried plasmid DNA (reconstitute with 100 ul of water).

- Reconstitution Method:**
1. Centrifuge at 5,000xg for 5min.
  2. Carefully open the tube and add 100ul of sterile water to dissolve the DNA.
  3. Close the tube and incubate for 10 minutes at room temperature.
  4. Briefly vortex the tube and then do a quick spin (less than 5000xg) to concentrate the liquid at the bottom.
  5. Store the suspended plasmid at -20°C. The DNA is stable for at least one year from date of shipping when stored at -20°C.

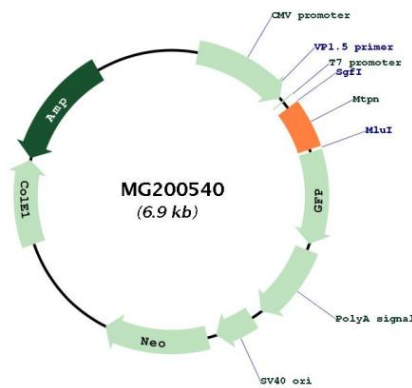
**Note:** Plasmids are not sterile. For experiments where strict sterility is required, filtration with 0.22um filter is required.

**RefSeq:** [NM\\_008098.4](#)  
**RefSeq Size:** 3863 bp  
**RefSeq ORF:** 357 bp  
**Locus ID:** 14489  
**UniProt ID:** [P62774](#)

**Cytogenetics:** 6 B1

**Gene Summary:** Promotes dimerization of NF-kappa-B subunits and regulates NF-kappa-B transcription factor activity. Promotes growth of cardiomyocytes, but not cardiomyocyte proliferation. Promotes cardiac muscle hypertrophy (By similarity). Plays a role in the regulation of the growth of actin filaments. Inhibits the activity of the F-actin-capping protein complex formed by the CAPZA1 and CAPZB heterodimer.[UniProtKB/Swiss-Prot Function]

**Product images:**



Circular map for MG200540