

## Product datasheet for **MG200529**

### Med11 (NM\_025397) Mouse Tagged ORF Clone

#### Product data:

**Product Type:** Expression Plasmids  
**Product Name:** Med11 (NM\_025397) Mouse Tagged ORF Clone  
**Tag:** TurboGFP  
**Symbol:** Med11  
**Synonyms:** 1110030J09Rik; AI465144; AW545069  
**Mammalian Cell Selection:** Neomycin  
**Vector:** pCMV6-AC-GFP (PS100010)  
**E. coli Selection:** Ampicillin (100 ug/mL)  
**ORF Nucleotide Sequence:** >MG200529 representing NM\_025397  
**Red**=Cloning site **Blue**=ORF **Green**=Tags(s)

TTTTGTAATACGACTCACTATAGGGCGGCCGGAATTCGTCGACTGGATCCGGTACCGAGGAGATCTGCC  
GCC**CGATCGCC**

ATGGCTACCTACAGTCTGGCGAACGAGCGGCTGCGCGCCCTGGAGGATATCGAGCGGAAATCGCGCCA  
TCCTCCAGAACGCAGGAACGGCGATCCTGGAAGTGTCCAAGAAAAGACTAACGAGCGGCTCCTCGACCG  
GCAGGGCGCAGCCTTCACTTCTGTGCAGCACGTGGAGGCAGAGCTATCCGCTCAAATCCGCTACCTC  
ACTCAGGTGGCCACAGGGCAGCCGATGAGGGCTCCAGCTACTCTCCAGGAAGGACTGTCAAATGGCTC  
TAAAGCGAGTAGACTACGCCCGCTCAAGATTAGTGATGTGGCGAGAACCTGTGAGCAGATGCTGGAGAA  
C

**ACGCGTACGCGGCCGCTCGAG** - GFP Tag - GTTTAA

**Protein Sequence:** >MG200529 representing NM\_025397  
**Red**=Cloning site **Green**=Tags(s)  
MATYSLANERLRALEDIEREIGAILQNAGTAAILELSKEKTNERLLDRQAAAFSTSVQHVEAELSAQIRYL  
TQVATGQPHEGSSYSSRKDCQMALKRVDYARLKI SDVARTCEQMLEN

**TRTRPLE** - GFP Tag - V

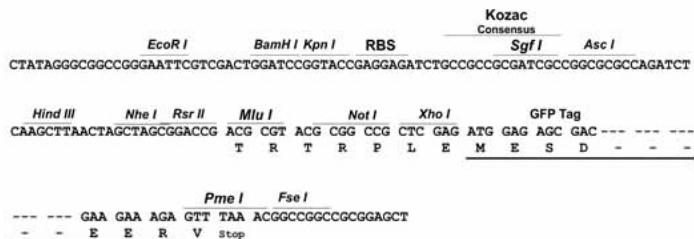
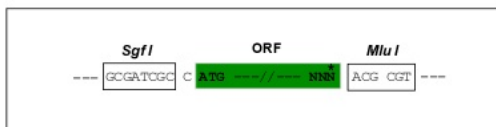
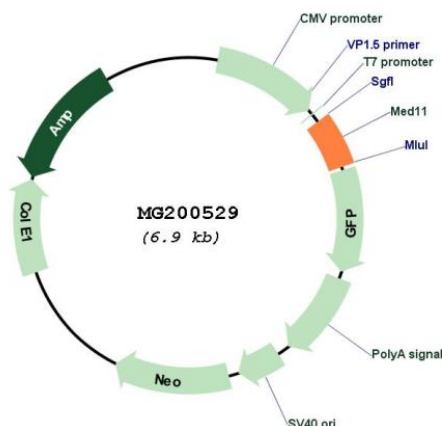
**Restriction Sites:** Sgfl-MluI



[View online »](#)

**Cloning Scheme:**

Cloning sites used for ORF Shutting:


**Plasmid Map:**

**ACCN:** NM\_025397

**ORF Size:** 351 bp

**OTI Disclaimer:** The molecular sequence of this clone aligns with the gene accession number as a point of reference only. However, individual transcript sequences of the same gene can differ through naturally occurring variations (e.g. polymorphisms), each with its own valid existence. This clone is substantially in agreement with the reference, but a complete review of all prevailing variants is recommended prior to use. [More info](#)

<b>OTI Annotation:</b>	This clone was engineered to express the complete ORF with an expression tag. Expression varies depending on the nature of the gene.
<b>Components:</b>	The ORF clone is ion-exchange column purified and shipped in a 2D barcoded Matrix tube containing 10ug of transfection-ready, dried plasmid DNA (reconstitute with 100 ul of water).
<b>Reconstitution Method:</b>	<ol style="list-style-type: none"><li>1. Centrifuge at 5,000xg for 5min.</li><li>2. Carefully open the tube and add 100ul of sterile water to dissolve the DNA.</li><li>3. Close the tube and incubate for 10 minutes at room temperature.</li><li>4. Briefly vortex the tube and then do a quick spin (less than 5000xg) to concentrate the liquid at the bottom.</li><li>5. Store the suspended plasmid at -20°C. The DNA is stable for at least one year from date of shipping when stored at -20°C.</li></ol>
<b>RefSeq:</b>	<a href="#">NM_025397.2</a> , <a href="#">NP_079673.2</a>
<b>RefSeq Size:</b>	903 bp
<b>RefSeq ORF:</b>	354 bp
<b>Locus ID:</b>	66172
<b>UniProt ID:</b>	<a href="#">Q9D8C6</a>
<b>Cytogenetics:</b>	11 B3
<b>Gene Summary:</b>	Component of the Mediator complex, a coactivator involved in the regulated transcription of nearly all RNA polymerase II-dependent genes. Mediator functions as a bridge to convey information from gene-specific regulatory proteins to the basal RNA polymerase II transcription machinery. Mediator is recruited to promoters by direct interactions with regulatory proteins and serves as a scaffold for the assembly of a functional preinitiation complex with RNA polymerase II and the general transcription factors (By similarity). [UniProtKB/Swiss-Prot Function]