

## Product datasheet for **MG200510**

### Ensa (NM\_001026212) Mouse Tagged ORF Clone

#### Product data:

**Product Type:** Expression Plasmids  
**Product Name:** Ensa (NM\_001026212) Mouse Tagged ORF Clone  
**Tag:** TurboGFP  
**Symbol:** Ensa  
**Synonyms:** 1700020C18Rik; 2610007F17Rik; AI451924  
**Mammalian Cell Selection:** Neomycin  
**Vector:** pCMV6-AC-GFP (PS100010)  
**E. coli Selection:** Ampicillin (100 ug/mL)  
**ORF Nucleotide Sequence:** >MG200510 representing NM\_001026212  
**Red**=Cloning site **Blue**=ORF **Green**=Tags(s)

TTTGTGTAATACGACTCACTATAGGGCGGCCGGAATTCGTCGACTGGATCCGGTACCGAGGAGATCTGCC  
GCC**CGATCGC**

ATGTCCAGAAACAAGAAGAAAACCTGCGGAGGAGACCGGCGAGGAGAAGCAGGATACACAGGAGA  
AAGAAGGGATTCTCCCTGAGAAAGCTGAGGAGGCAAAGCTAAAGGCCAAATATCCAAGCCTAGGACAAAA  
GCCTGGAGGCTCCGACTTCCTCATGAAGAGACTCCAGAAAGGGCAAAAGTACTTTGACTCAGGAGACTAC  
AACATGGCCAAAGCCAAGATGAAGAACAAGCAGCTGCCAAGTGCAGGAGCAGACAAGAACCTGGTGACCG  
GTGACCACATCCCACCCACAGGACCTGCCCCAGAGAAAGTCTCGCTCGTCACCAGCAAGCTTGCGGG  
G

**ACGCGT**ACGCGGCCGCTCGAG - GFP Tag - GTTTAA

**Protein Sequence:** >MG200510 representing NM\_001026212  
**Red**=Cloning site **Green**=Tags(s)

MSQKQEEENPAEETGEEKQDTQEKEGILPEKAEAKLKAKYPSLGQKPGGSDFLMKRLQKGQKYFDSGDY  
NMAKAKMKNKQLPSAGADKNLVTGDHIPTQDLPRKSSLVTSKLAG

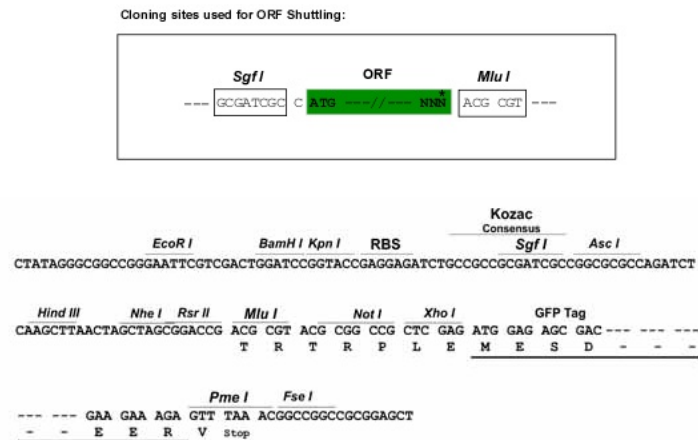
**TRTRPLE** - GFP Tag - V

**Restriction Sites:** SgfI-MluI

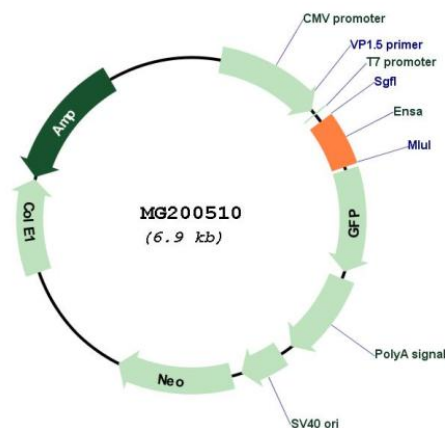


[View online »](#)

## Cloning Scheme:



## Plasmid Map:



ACCN: NM\_001026212

ORF Size: 351 bp

OTI Disclaimer: The molecular sequence of this clone aligns with the gene accession number as a point of reference only. However, individual transcript sequences of the same gene can differ through naturally occurring variations (e.g. polymorphisms), each with its own valid existence. This clone is substantially in agreement with the reference, but a complete review of all prevailing variants is recommended prior to use. [More info](#)

<b>OTI Annotation:</b>	This clone was engineered to express the complete ORF with an expression tag. Expression varies depending on the nature of the gene.
<b>Components:</b>	The ORF clone is ion-exchange column purified and shipped in a 2D barcoded Matrix tube containing 10ug of transfection-ready, dried plasmid DNA (reconstitute with 100 ul of water).
<b>Reconstitution Method:</b>	<ol style="list-style-type: none"> <li>1. Centrifuge at 5,000xg for 5min.</li> <li>2. Carefully open the tube and add 100ul of sterile water to dissolve the DNA.</li> <li>3. Close the tube and incubate for 10 minutes at room temperature.</li> <li>4. Briefly vortex the tube and then do a quick spin (less than 5000xg) to concentrate the liquid at the bottom.</li> <li>5. Store the suspended plasmid at -20°C. The DNA is stable for at least one year from date of shipping when stored at -20°C.</li> </ol>
<b>RefSeq:</b>	<a href="#">NM_001026212.1</a> , <a href="#">NP_001021383.1</a>
<b>RefSeq Size:</b>	2276 bp
<b>RefSeq ORF:</b>	354 bp
<b>Locus ID:</b>	56205
<b>UniProt ID:</b>	<a href="#">P60840</a>
<b>Cytogenetics:</b>	3 F2.1
<b>Gene Summary:</b>	<p>Protein phosphatase inhibitor that specifically inhibits protein phosphatase 2A (PP2A) during mitosis. When phosphorylated at Ser-67 during mitosis, specifically interacts with PPP2R2D (PR55-delta) and inhibits its activity, leading to inactivation of PP2A, an essential condition to keep cyclin-B1-CDK1 activity high during M phase. Also acts as a stimulator of insulin secretion by interacting with sulfonylurea receptor (ABCC8), thereby preventing sulfonylurea from binding to its receptor and reducing K(ATP) channel currents (By similarity).</p> <p>[UniProtKB/Swiss-Prot Function]</p>