

## Product datasheet for **MG200414**

### **Pclaf (NM\_026515) Mouse Tagged ORF Clone**

#### Product data:

**Product Type:** Expression Plasmids  
**Product Name:** Pclaf (NM\_026515) Mouse Tagged ORF Clone  
**Tag:** TurboGFP  
**Symbol:** Pclaf  
**Synonyms:** 2810417H13Rik; AA409629; mKIAA0101; Ns5apt9; Ns5atp9; p15(PAF); Paf; PAF15  
**Mammalian Cell Selection:** Neomycin  
**Vector:** pCMV6-AC-GFP (PS100010)  
**E. coli Selection:** Ampicillin (100 ug/mL)  
**ORF Nucleotide Sequence:** >MG200414 representing NM\_026515  
Red=Cloning site Blue=ORF Green=Tags(s)

TTTTGTAAATACGACTCACTATAGGGCGGCCGGAATTCGTCGACTGGATCCGGTACCGAGGAGATCTGCC  
 GCCCGATCGCC

ATGGTGCGGACCAAAGCAAACACTACGTTCCAGGAGCCTACAGAAAAGCGGTGGCTTCTCAAGCCCCTAGGA  
AGGTGCTTGGCTCCTCCACCTTTGTACCAATTCTTCAAGTTCGTCGAGAAAAGCTGAAAATAAGTATGC  
AGGAGGGAACCCAGTCTGTGTGCGCCCACTCCAAGTGGCAAAAAGGCATCGGGGAATTCTTCAGGCTG  
TCCCCTAAAGAGTCTAAAAGGAAAACCAGGCTCCTGAAGAAGCAGGAACCAAGTGGCTTAGGAAAAGCAA  
AGAGAAAAGCTTGCTCTTGCAACCTGATCACAGAGATGATGAAAATGAA

ACGCGTACGCGGCCGCTCGAG - GFP Tag - GTTTAA

**Protein Sequence:** >MG200414 representing NM\_026515  
Red=Cloning site Green=Tags(s)  
 MVRTKANYVPGAYRKAVASQAPRKVLGSSTFVTNSSSSSRKAENKYAGGNPVCVRPTPKWQKGIGIEFFRL  
 SPKESKKENQAPEEAGTSGLGAKRKACPLQPDHRDDENE

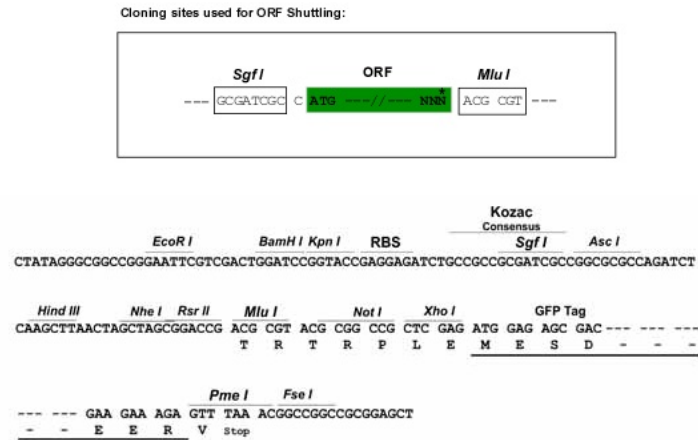
TRTRPLE - GFP Tag - V

**Restriction Sites:** SgfI-MluI

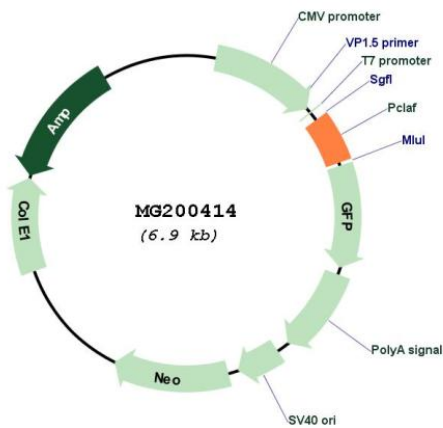


[View online »](#)

## Cloning Scheme:



## Plasmid Map:



ACCN: NM\_026515

ORF Size: 330 bp

OTI Disclaimer: The molecular sequence of this clone aligns with the gene accession number as a point of reference only. However, individual transcript sequences of the same gene can differ through naturally occurring variations (e.g. polymorphisms), each with its own valid existence. This clone is substantially in agreement with the reference, but a complete review of all prevailing variants is recommended prior to use. [More info](#)

<b>OTI Annotation:</b>	This clone was engineered to express the complete ORF with an expression tag. Expression varies depending on the nature of the gene.
<b>Components:</b>	The ORF clone is ion-exchange column purified and shipped in a 2D barcoded Matrix tube containing 10ug of transfection-ready, dried plasmid DNA (reconstitute with 100 ul of water).
<b>Reconstitution Method:</b>	<ol style="list-style-type: none"> <li>1. Centrifuge at 5,000xg for 5min.</li> <li>2. Carefully open the tube and add 100ul of sterile water to dissolve the DNA.</li> <li>3. Close the tube and incubate for 10 minutes at room temperature.</li> <li>4. Briefly vortex the tube and then do a quick spin (less than 5000xg) to concentrate the liquid at the bottom.</li> <li>5. Store the suspended plasmid at -20°C. The DNA is stable for at least one year from date of shipping when stored at -20°C.</li> </ol>
<b>RefSeq:</b>	<u><a href="#">NM_026515.2</a></u> , <u><a href="#">NP_080791.2</a></u>
<b>RefSeq Size:</b>	2387 bp
<b>RefSeq ORF:</b>	333 bp
<b>Locus ID:</b>	68026
<b>UniProt ID:</b>	<u><a href="#">Q9CQX4</a></u>
<b>Cytogenetics:</b>	9 C
<b>Gene Summary:</b>	<p>PCNA-binding protein that acts as a regulator of DNA repair during DNA replication. Following DNA damage, the interaction with PCNA is disrupted, facilitating the interaction between monoubiquitinated PCNA and the translesion DNA synthesis DNA polymerase eta (POLH) at stalled replisomes, facilitating the bypass of replication-fork-blocking lesions. Also acts as a regulator of centrosome number (By similarity).[UniProtKB/Swiss-Prot Function]</p>