

Product datasheet for **MG200343**

Tceal9 (NM_011712) Mouse Tagged ORF Clone

Product data:

Product Type: Expression Plasmids

Tag: TurboGFP

Symbol: Tceal9

Synonyms: AL024233; Wbp5

Mammalian Cell Selection: Neomycin

Vector: pCMV6-AC-GFP (PS100010)

E. coli Selection: Ampicillin (100 ug/mL)

ORF Nucleotide Sequence: >MG200343 representing NM_011712
Red=Cloning site Blue=ORF Green=Tags(s)

TTTTGTAATACGACTCACTATAGGGCGCCGGGAATTCGTCGACTGGATCCGGTACCGAGGAGATCTGCC
GCC**GCGATCGCC**

ATGAAACCTGCCAAAAATGGAAGGAAACCTAGAAAAGGAGGATGAGCCAAAGCCTGAGGAAGAGCCAA
AGCCGGAGGAAAAGCCCGAGGAGGGGAGGAAACCCGAGGAGGAGGAGAAATCCGAAGAACTTTTCGGGA
GAGGCTGATCCGGTCTCTGCAGGATTTTCAGGAGGATATACACAACAGGCACCTGAGCAGTGATGATCTG
TTTAGAGATGTGGAGGAGCTAGATGAGATCAGGAAAGTGAGAAACAACTTATAGTGACCGGTTGGAAGG
CTAACCGAAGCCATCCTTACCCCTATTTAATG

AG**CGGACCG**ACGCGTACGCGCGCGCTCGAG - GFP Tag - GTTTAA

Protein Sequence: >MG200343 representing NM_011712
Red=Cloning site Green=Tags(s)

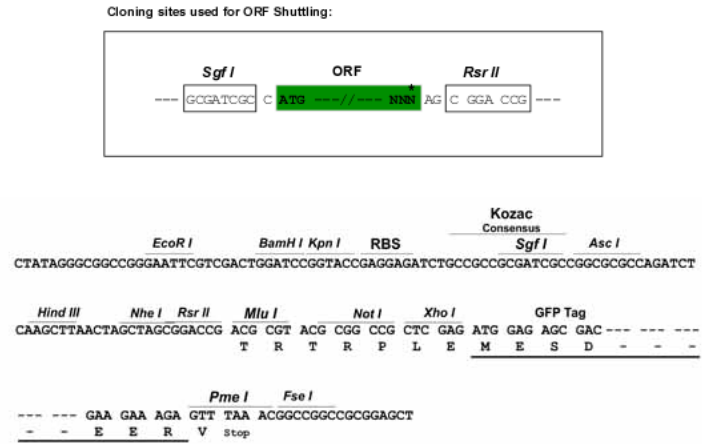
MKPCQKMEGNLEKEDEPKPEEKPPEEKPEEGQEPEEEKSEETFRRERLIRSLQDFQEDIHNRHLSDDL
FRDVEELDEIRKVRNKLIVTRWKANRSHYPYLM

SG**P**TRRRLE - GFP Tag - V

Restriction Sites: SgfI-RsrII



Cloning Scheme:



ACCN: NM_011712

ORF Size: 312 bp

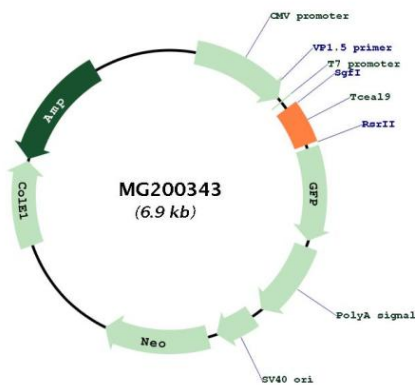
OTI Disclaimer: The molecular sequence of this clone aligns with the gene accession number as a point of reference only. However, individual transcript sequences of the same gene can differ through naturally occurring variations (e.g. polymorphisms), each with its own valid existence. This clone is substantially in agreement with the reference, but a complete review of all prevailing variants is recommended prior to use. [More info](#)

OTI Annotation: This clone was engineered to express the complete ORF with an expression tag. Expression varies depending on the nature of the gene.

Components: The ORF clone is ion-exchange column purified and shipped in a 2D barcoded Matrix tube containing 10ug of transfection-ready, dried plasmid DNA (reconstitute with 100 ul of water).

- Reconstitution Method:**
1. Centrifuge at 5,000xg for 5min.
 2. Carefully open the tube and add 100ul of sterile water to dissolve the DNA.
 3. Close the tube and incubate for 10 minutes at room temperature.
 4. Briefly vortex the tube and then do a quick spin (less than 5000xg) to concentrate the liquid at the bottom.
 5. Store the suspended plasmid at -20°C. The DNA is stable for at least one year from date of shipping when stored at -20°C.

Note:	Plasmids are not sterile. For experiments where strict sterility is required, filtration with 0.22um filter is required.
RefSeq:	NM_011712.2 , NP_035842.1
RefSeq Size:	1018 bp
RefSeq ORF:	315 bp
Locus ID:	22381
UniProt ID:	Q9DD24
Cytogenetics:	X F1
Gene Summary:	May be involved in transcriptional regulation.[UniProtKB/Swiss-Prot Function]

Product images:

Circular map for MG200343