

Product datasheet for **MG200298**

Bloc1s2 (BC065806) Mouse Tagged ORF Clone

Product data:

Product Type: Expression Plasmids
Product Name: Bloc1s2 (BC065806) Mouse Tagged ORF Clone
Tag: TurboGFP
Symbol: Bloc1s2
Synonyms: 2410089B13Rik; Bloc1s2a; BLOS2
Mammalian Cell Selection: Neomycin
Vector: pCMV6-AC-GFP (PS100010)
E. coli Selection: Ampicillin (100 ug/mL)
ORF Nucleotide Sequence: >MG200298 representing BC065806
Red=Cloning site Blue=ORF Green=Tags(s)

TTTTGTAATACGACTCACTATAGGGCGGCCGGAATTCGTCGACTGGATCCGGTACCGAGGAGATCTGCC
GCC**CGATCGCC**

ATGTTCTCAAAATGGCCACATATTTGACTGGGAACTGACAGCCACCAGTGAAGACTACAACTCCTGG
AAAATATGAATAAGCTAACAAAGCTTGAAGTACCTTGAATGAAAGATATTGCTATCAACATCAGCAGAAA
CCTGAAGGACTTAAACCAGAAATATGCTGAACTACAGCCATATCTGGACCAGATCAACATGATTGAGGAG
CAGGTGGCAGCTCTGGAGCAGGCAGCCTACAAGCTCGATGCTTATCAAAAAACTGGAAGCCAAGTACA
AGAAGTTGGAGAAGCGA

ACGCGTACGCGGCCGCTCGAG - GFP Tag - GTTTAA

Protein Sequence: >MG200298 representing BC065806
Red=Cloning site Green=Tags(s)
MFSKMATYLTGELTATSEDYKLLNMNKLTSKYLEMKDIAINISRNLDLNQKYAELQPYLDQINMIEE
QVAALEQAAYKLDAYSKKLEAKYKLEKR

TRTRPLE - GFP Tag - V

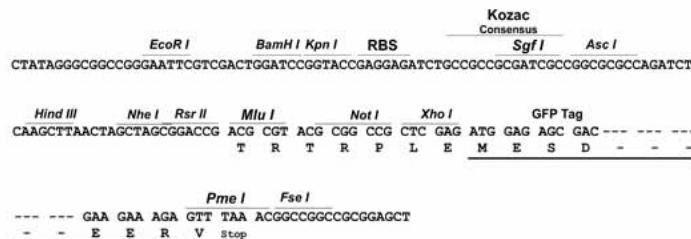
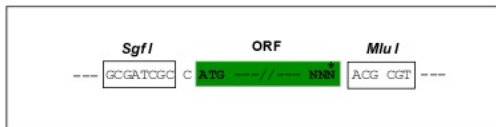
Restriction Sites: Sgfl-MluI



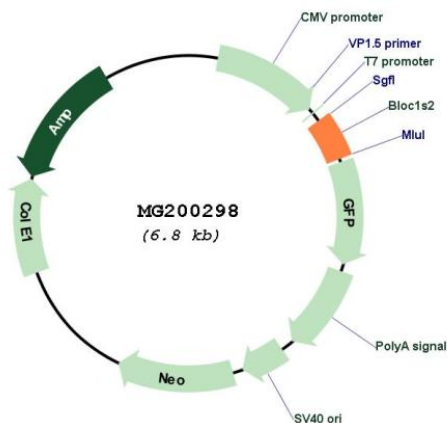
[View online »](#)

Cloning Scheme:

Cloning sites used for ORF Shutting:



Plasmid Map:



ACCN: BC065806

ORF Size: 299 bp

OTI Disclaimer: The molecular sequence of this clone aligns with the gene accession number as a point of reference only. However, individual transcript sequences of the same gene can differ through naturally occurring variations (e.g. polymorphisms), each with its own valid existence. This clone is substantially in agreement with the reference, but a complete review of all prevailing variants is recommended prior to use. [More info](#)

OTI Annotation:	This clone was engineered to express the complete ORF with an expression tag. Expression varies depending on the nature of the gene.
Components:	The ORF clone is ion-exchange column purified and shipped in a 2D barcoded Matrix tube containing 10ug of transfection-ready, dried plasmid DNA (reconstitute with 100 ul of water).
Reconstitution Method:	<ol style="list-style-type: none">1. Centrifuge at 5,000xg for 5min.2. Carefully open the tube and add 100ul of sterile water to dissolve the DNA.3. Close the tube and incubate for 10 minutes at room temperature.4. Briefly vortex the tube and then do a quick spin (less than 5000xg) to concentrate the liquid at the bottom.5. Store the suspended plasmid at -20°C. The DNA is stable for at least one year from date of shipping when stored at -20°C.
RefSeq:	<u>BC065806</u> , <u>AAH65806</u>
RefSeq Size:	962 bp
RefSeq ORF:	299 bp
Locus ID:	73689
Cytogenetics:	19 C3
Gene Summary:	Component of the BLOC-1 complex, a complex that is required for normal biogenesis of lysosome-related organelles (LRO), such as platelet dense granules and melanosomes (By similarity). In concert with the AP-3 complex, the BLOC-1 complex is required to target membrane protein cargos into vesicles assembled at cell bodies for delivery into neurites and nerve terminals (PubMed:16760431, PubMed:21998198). The BLOC-1 complex, in association with SNARE proteins, is also proposed to be involved in neurite extension (PubMed:19546860). As part of the BORC complex may play a role in lysosomes movement and localization at the cell periphery. Associated with the cytosolic face of lysosomes, the BORC complex may recruit ARL8B and couple lysosomes to microtubule plus-end-directed kinesin motor (By similarity).[UniProtKB/Swiss-Prot Function]