

Product datasheet for **MG200185**

Smpx (NM_025357) Mouse Tagged ORF Clone

Product data:

Product Type: Expression Plasmids
Product Name: Smpx (NM_025357) Mouse Tagged ORF Clone
Tag: TurboGFP
Symbol: Smpx
Synonyms: 1010001C09Rik; Csl
Mammalian Cell Selection: Neomycin
Vector: pCMV6-AC-GFP (PS100010)
E. coli Selection: Ampicillin (100 ug/mL)
ORF Nucleotide Sequence: >MG200185 representing NM_025357
Red=Cloning site Blue=ORF Green=Tags(s)

TTTTGTAATACGACTCACTATAGGGCGGCCGGAATTCGTCGACTGGATCCGGTACCGAGGAGATCTGCC
GCC**CGATCGCC**

ATGTCGAAGCAGCCAATTTCCAACGTCAGAGCCATCCAGGCGAATATCAATATTCCAATGGGAGCCTTTC
GTCCGGGAGCTGGGCAGCCTCCCAGAAGGAAAGAGAGTACTCCTGAAACTGAGGAGGGAGCTCCTACCAC
CTCAGAGGAAAAGAAGCCAATTCCTGGAATGAAGAAATTTCCAGGACCTGTTGTCAACTGTCTGAGATC
CAAAATGTTAAAAGTGAAGTGAATTTGTCCCAAAGGTGAACAG

ACGCGTACGCGGCCGCTCGAG - GFP Tag - GTTTAA

Protein Sequence: >MG200185 representing NM_025357
Red=Cloning site Green=Tags(s)
MSKQPISNVRAIQANINIPMGAFRPGAGQPPRRKESTPETEEGAPTTSEEKKPIPGMKKFPGPVNLSEI
QNVKSELKFVPKGEQ

TRTRPLE - GFP Tag - V

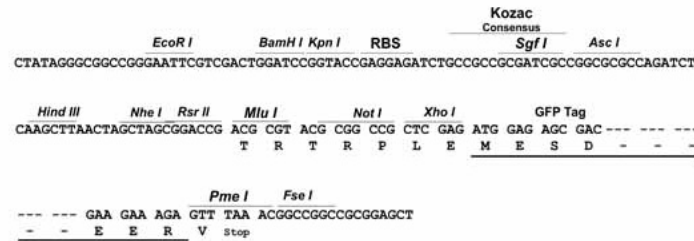
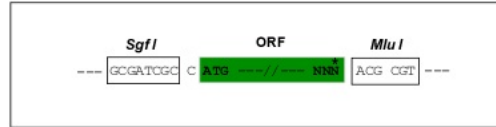
Restriction Sites: Sgfl-MluI



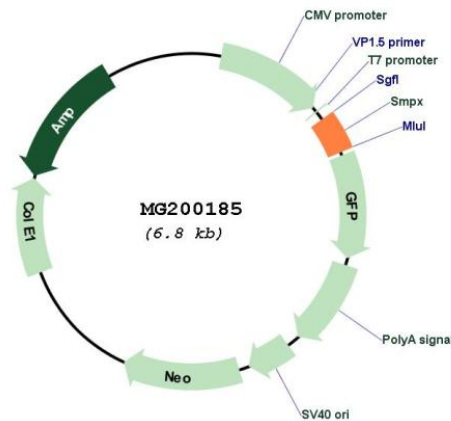
[View online »](#)

Cloning Scheme:

Cloning sites used for ORF Shutting:



Plasmid Map:



ACCN: NM_025357

ORF Size: 255 bp

OTI Disclaimer: The molecular sequence of this clone aligns with the gene accession number as a point of reference only. However, individual transcript sequences of the same gene can differ through naturally occurring variations (e.g. polymorphisms), each with its own valid existence. This clone is substantially in agreement with the reference, but a complete review of all prevailing variants is recommended prior to use. [More info](#)

OTI Annotation:	This clone was engineered to express the complete ORF with an expression tag. Expression varies depending on the nature of the gene.
Components:	The ORF clone is ion-exchange column purified and shipped in a 2D barcoded Matrix tube containing 10ug of transfection-ready, dried plasmid DNA (reconstitute with 100 ul of water).
Reconstitution Method:	<ol style="list-style-type: none">1. Centrifuge at 5,000xg for 5min.2. Carefully open the tube and add 100ul of sterile water to dissolve the DNA.3. Close the tube and incubate for 10 minutes at room temperature.4. Briefly vortex the tube and then do a quick spin (less than 5000xg) to concentrate the liquid at the bottom.5. Store the suspended plasmid at -20°C. The DNA is stable for at least one year from date of shipping when stored at -20°C.
RefSeq:	<u>NM_025357.3</u> , <u>NP_079633.1</u>
RefSeq Size:	943 bp
RefSeq ORF:	258 bp
Locus ID:	66106
Cytogenetics:	X F4
Gene Summary:	Plays a role in the regulatory network through which muscle cells coordinate their structural and functional states during growth, adaptation, and repair.[UniProtKB/Swiss-Prot Function]