

Product datasheet for **MG200100**

Gng4 (NM_010317) Mouse Tagged ORF Clone

Product data:

Product Type: Expression Plasmids
Product Name: Gng4 (NM_010317) Mouse Tagged ORF Clone
Tag: TurboGFP
Symbol: Gng4
Mammalian Cell Selection: Neomycin
Vector: pCMV6-AC-GFP (PS100010)
E. coli Selection: Ampicillin (100 ug/mL)
ORF Nucleotide Sequence: >MG200100 representing NM_010317
Red=Cloning site Blue=ORF Green=Tags(s)

TTTTGTAATACGACTCACTATAGGGCGGCCGGAATTCGTCGACTGGATCCGGTACCGAGGAGATCTGCC
GCC**CGATCGCC**

ATGAAGGAAGGCATGTCTAATAACAGCACCACCAGCATCTCCCAGGCCAGGAAAGCCGTGGAGCAGCTGA
AGATGGAAGCCTGCATGGACAGGGTGAAGGTCTCCCAGGCTGCCTCAGACCTCCTGGCCTACTGTGAAGC
CCACGTGCGGGAGGACCCCTCATCATCCAGTGCCTGCCTCAGAAAACCCCTTCCGGGAGAAGAAGTTC
TTCTGCACCATCCTC

ACGCGTACGCGGCCGCTCGAG - GFP Tag - GTTTAA

Protein Sequence: >MG200100 representing NM_010317
Red=Cloning site Green=Tags(s)
MKEGMSNNSTTSISQARKAVEQLKMEACMDRVKVSQAASDLLAYCEAHVREDPLIIPVPASENPFREKKF
FCTIL

TRTRPLE - GFP Tag - V

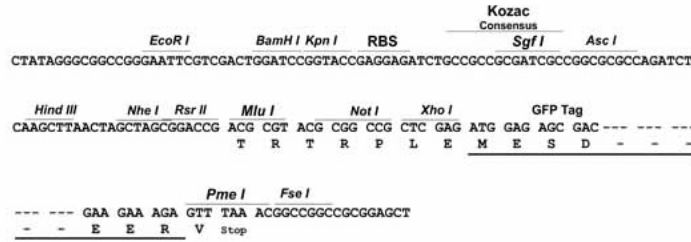
Restriction Sites: SgfI-MluI



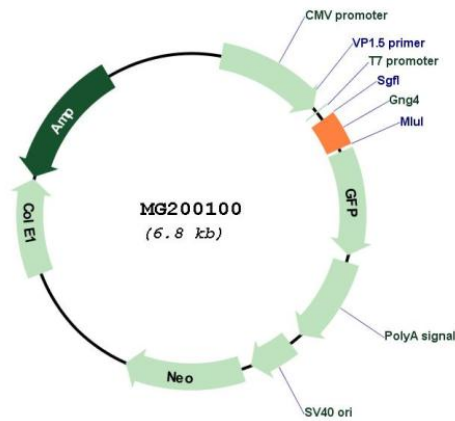
[View online »](#)

Cloning Scheme:

Cloning sites used for ORF Shutting:



Plasmid Map:



ACCN: NM_010317
 ORF Size: 225 bp

OTI Disclaimer:	The molecular sequence of this clone aligns with the gene accession number as a point of reference only. However, individual transcript sequences of the same gene can differ through naturally occurring variations (e.g. polymorphisms), each with its own valid existence. This clone is substantially in agreement with the reference, but a complete review of all prevailing variants is recommended prior to use. More info
OTI Annotation:	This clone was engineered to express the complete ORF with an expression tag. Expression varies depending on the nature of the gene.
Components:	The ORF clone is ion-exchange column purified and shipped in a 2D barcoded Matrix tube containing 10ug of transfection-ready, dried plasmid DNA (reconstitute with 100 ul of water).
Reconstitution Method:	<ol style="list-style-type: none">1. Centrifuge at 5,000xg for 5min.2. Carefully open the tube and add 100ul of sterile water to dissolve the DNA.3. Close the tube and incubate for 10 minutes at room temperature.4. Briefly vortex the tube and then do a quick spin (less than 5000xg) to concentrate the liquid at the bottom.5. Store the suspended plasmid at -20°C. The DNA is stable for at least one year from date of shipping when stored at -20°C.
RefSeq:	NM_010317.3 , NP_034447.1
RefSeq Size:	2976 bp
RefSeq ORF:	228 bp
Locus ID:	14706
UniProt ID:	P50153
Cytogenetics:	13 5.29 cM
Gene Summary:	This gene encodes the gamma subunit of the heterotrimeric G-proteins that are comprised of alpha, beta and gamma subunits. Upon activation by G protein-coupled receptors, the beta-gamma heterodimer dissociates from the alpha subunit to activate downstream signaling events. Alternate splicing results in multiple transcript variants. [provided by RefSeq, Dec 2014]