

## Product datasheet for **MG200077**

### **Ndufa1 (NM\_019443) Mouse Tagged ORF Clone**

#### Product data:

**Product Type:** Expression Plasmids  
**Product Name:** Ndufa1 (NM\_019443) Mouse Tagged ORF Clone  
**Tag:** TurboGFP  
**Symbol:** Ndufa1  
**Synonyms:** 1810049F12Rik; MWFE  
**Mammalian Cell Selection:** Neomycin  
**Vector:** pCMV6-AC-GFP (PS100010)  
**E. coli Selection:** Ampicillin (100 ug/mL)  
**ORF Nucleotide Sequence:** >MG200077 representing NM\_019443  
Red=Cloning site Blue=ORF Green=Tags(s)

TTTTGTAATACGACTCACTATAGGGCGGCCGGAATTCGTCGACTGGATCCGGTACCGAGGAGATCTGCC  
GCC**CGATCGCC**

ATGTGGTTCGAGATTCTCCCTGGCCTCGCCATTATGGGGGTGTGCTTGGTCATCCCCGGGGTGTCCACTG  
CGTACATCCCAAATTCACCAACGGGGCAAGGAAAAACGAGTTGCTCGTGTTCAGTACCAGTGGTATCT  
GATGGAACGCGATAGACGTATCTCTGGAGTCAATCGCTACTATGTGTCCAAGGGCCTGGAAACATTGAC

**ACGCGT**ACGCGGCCGCTCGAG - GFP Tag - GTTTAA

**Protein Sequence:** >MG200077 representing NM\_019443  
Red=Cloning site Green=Tags(s)

MWFEILPGLAIMGVCLVIPGVSTAYIHKFTNGGKEKRVARVQYWYLMERDRRISGVNRYVYVSKGLENID

**TRTRPLE** - GFP Tag - V

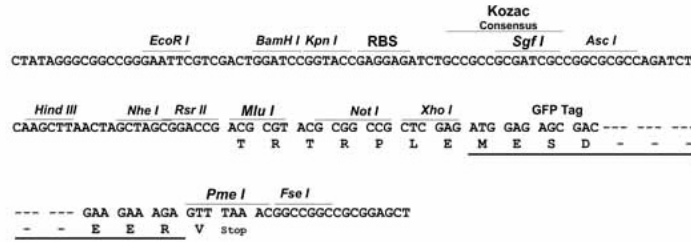
**Restriction Sites:** Sgfl-MluI



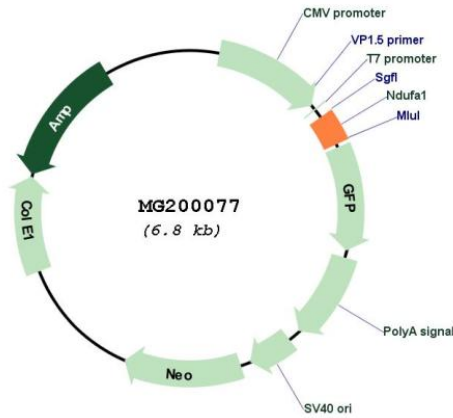
[View online »](#)

Cloning Scheme:

Cloning sites used for ORF Shutting:



Plasmid Map:



ACCN: NM\_019443

ORF Size: 210 bp

<b>OTI Disclaimer:</b>	The molecular sequence of this clone aligns with the gene accession number as a point of reference only. However, individual transcript sequences of the same gene can differ through naturally occurring variations (e.g. polymorphisms), each with its own valid existence. This clone is substantially in agreement with the reference, but a complete review of all prevailing variants is recommended prior to use. <a href="#">More info</a>
<b>OTI Annotation:</b>	This clone was engineered to express the complete ORF with an expression tag. Expression varies depending on the nature of the gene.
<b>Components:</b>	The ORF clone is ion-exchange column purified and shipped in a 2D barcoded Matrix tube containing 10ug of transfection-ready, dried plasmid DNA (reconstitute with 100 ul of water).
<b>Reconstitution Method:</b>	<ol style="list-style-type: none"><li>1. Centrifuge at 5,000xg for 5min.</li><li>2. Carefully open the tube and add 100ul of sterile water to dissolve the DNA.</li><li>3. Close the tube and incubate for 10 minutes at room temperature.</li><li>4. Briefly vortex the tube and then do a quick spin (less than 5000xg) to concentrate the liquid at the bottom.</li><li>5. Store the suspended plasmid at -20°C. The DNA is stable for at least one year from date of shipping when stored at -20°C.</li></ol>
<b>RefSeq:</b>	<a href="#">NM_019443.2</a> , <a href="#">NP_062316.1</a>
<b>RefSeq Size:</b>	516 bp
<b>RefSeq ORF:</b>	213 bp
<b>Locus ID:</b>	54405
<b>UniProt ID:</b>	<a href="#">O35683</a>
<b>Cytogenetics:</b>	X A3.3
<b>Gene Summary:</b>	Accessory subunit of the mitochondrial membrane respiratory chain NADH dehydrogenase (Complex I), that is believed not to be involved in catalysis. Complex I functions in the transfer of electrons from NADH to the respiratory chain. The immediate electron acceptor for the enzyme is believed to be ubiquinone.[UniProtKB/Swiss-Prot Function]