

Product datasheet for **MG200039**

Serf1 (NM_011353) Mouse Tagged ORF Clone

Product data:

Product Type: Expression Plasmids
Product Name: Serf1 (NM_011353) Mouse Tagged ORF Clone
Tag: TurboGFP
Symbol: Serf1
Synonyms: 4F5; m4F5; Msmac1
Mammalian Cell Selection: Neomycin
Vector: pCMV6-AC-GFP (PS100010)
E. coli Selection: Ampicillin (100 ug/mL)
ORF Nucleotide Sequence: >MG200039 representing NM_011353
 Red=Cloning site Blue=ORF Green=Tags(s)

TTTTGTAATACGACTCACTATAGGGCGGCCGGAATTCGTCGACTGGATCCGGTACCGAGGAGATCTGCC
 GCC**CGATCGCC**

ATGGCCCGTGAAATCAAAGAGAAATTGCCCGACAGAAAAACATGAAAAAGACCCAGGAAATTAGCAAAG
 GGAAAAGAAAAGAGGACAGCTTGACTGCCTCTCAGAGAAAGCAGAGGGATTAGAGATCATGCAACAAAA
 GCAGAAGATAGCCAATGAGAAGAAATCTATGCAGACAACAGAAAA

ACGCGTACGCGGCCGCTCGAG - GFP Tag - GTTTAA

Protein Sequence: >MG200039 representing NM_011353
 Red=Cloning site Green=Tags(s)

MARGNQREIARQKNMKKTQEISKGRKEDSLTASQRKQRDSEIMQQKQKIANEKKSMQTTEK

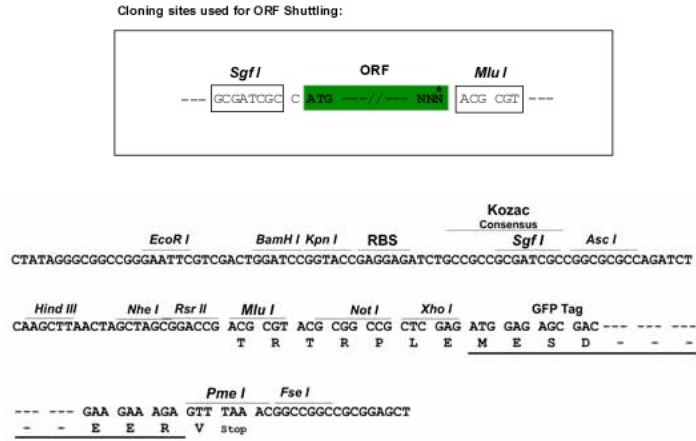
TRTRPLE - GFP Tag - V

Restriction Sites: Sgfl-Mlul

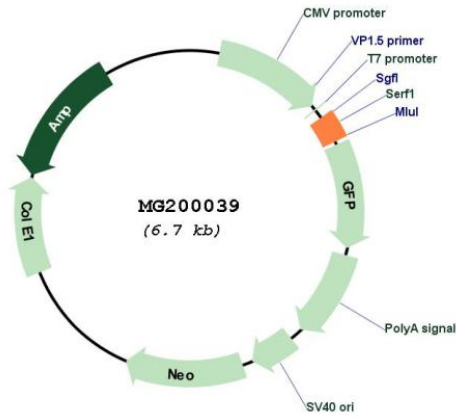


[View online »](#)

Cloning Scheme:



Plasmid Map:



ACCN: NM_011353

ORF Size: 186 bp

| | |
|-------------------------------|---|
| OTI Disclaimer: | The molecular sequence of this clone aligns with the gene accession number as a point of reference only. However, individual transcript sequences of the same gene can differ through naturally occurring variations (e.g. polymorphisms), each with its own valid existence. This clone is substantially in agreement with the reference, but a complete review of all prevailing variants is recommended prior to use. More info |
| OTI Annotation: | This clone was engineered to express the complete ORF with an expression tag. Expression varies depending on the nature of the gene. |
| Components: | The ORF clone is ion-exchange column purified and shipped in a 2D barcoded Matrix tube containing 10ug of transfection-ready, dried plasmid DNA (reconstitute with 100 ul of water). |
| Reconstitution Method: | <ol style="list-style-type: none">1. Centrifuge at 5,000xg for 5min.2. Carefully open the tube and add 100ul of sterile water to dissolve the DNA.3. Close the tube and incubate for 10 minutes at room temperature.4. Briefly vortex the tube and then do a quick spin (less than 5000xg) to concentrate the liquid at the bottom.5. Store the suspended plasmid at -20°C. The DNA is stable for at least one year from date of shipping when stored at -20°C. |
| RefSeq: | NM_011353.2 |
| RefSeq Size: | 586 bp |
| RefSeq ORF: | 189 bp |
| Locus ID: | 20365 |
| UniProt ID: | O88892 |
| Cytogenetics: | 13 52.98 cM |
| Gene Summary: | Positive regulator of amyloid protein aggregation and proteotoxicity (By similarity). Induces conformational changes in amyloid proteins, such as APP, HTT, and SNCA, driving them into compact formations preceding the formation of aggregates (By similarity).[UniProtKB/Swiss-Prot Function] |