

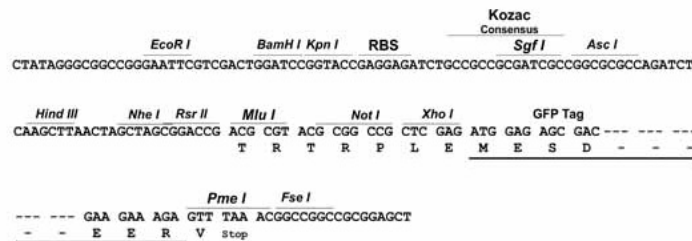
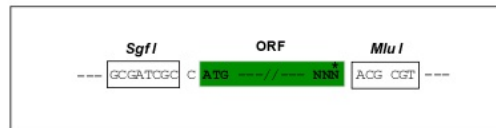
## Product datasheet for **MG200004**

### Sln (NM\_025540) Mouse Tagged ORF Clone

#### Product data:

Product Type: Expression Plasmids  
Product Name: Sln (NM\_025540) Mouse Tagged ORF Clone  
Tag: TurboGFP  
Symbol: Sln  
Synonyms: 2310045A07Rik  
Mammalian Cell Selection: Neomycin  
Vector: pCMV6-AC-GFP (PS100010)  
E. coli Selection: Ampicillin (100 ug/mL)  
Restriction Sites: SgfI-MluI  
Cloning Scheme:

Cloning sites used for ORF Shutting:



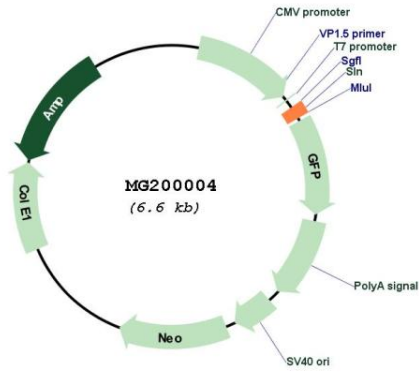
ACCN: NM\_025540  
ORF Size: 93 bp



[View online »](#)

<b>OTI Disclaimer:</b>	The molecular sequence of this clone aligns with the gene accession number as a point of reference only. However, individual transcript sequences of the same gene can differ through naturally occurring variations (e.g. polymorphisms), each with its own valid existence. This clone is substantially in agreement with the reference, but a complete review of all prevailing variants is recommended prior to use. <a href="#">More info</a>
<b>OTI Annotation:</b>	This clone was engineered to express the complete ORF with an expression tag. Expression varies depending on the nature of the gene.
<b>Components:</b>	The ORF clone is ion-exchange column purified and shipped in a 2D barcoded Matrix tube containing 10ug of transfection-ready, dried plasmid DNA (reconstitute with 100 ul of water).
<b>Reconstitution Method:</b>	<ol style="list-style-type: none"><li>1. Centrifuge at 5,000xg for 5min.</li><li>2. Carefully open the tube and add 100ul of sterile water to dissolve the DNA.</li><li>3. Close the tube and incubate for 10 minutes at room temperature.</li><li>4. Briefly vortex the tube and then do a quick spin (less than 5000xg) to concentrate the liquid at the bottom.</li><li>5. Store the suspended plasmid at -20°C. The DNA is stable for at least one year from date of shipping when stored at -20°C.</li></ol>
<b>RefSeq:</b>	<a href="#">NM_025540.2</a> , <a href="#">NP_079816.1</a>
<b>RefSeq Size:</b>	536 bp
<b>RefSeq ORF:</b>	96 bp
<b>Locus ID:</b>	66402
<b>UniProt ID:</b>	<a href="#">Q9CQD6</a>
<b>Cytogenetics:</b>	9 A5.3
<b>Gene Summary:</b>	Sarcoplasmic reticulum Ca(2+)-ATPases are transmembrane proteins that catalyze the ATP-dependent transport of Ca(2+) from the cytosol into the lumen of the sarcoplasmic reticulum in muscle cells. This gene encodes a small proteolipid that regulates several sarcoplasmic reticulum Ca(2+)-ATPases. The transmembrane protein interacts with Ca(2+)-ATPases and reduces the accumulation of Ca(2+) in the sarcoplasmic reticulum without affecting the rate of ATP hydrolysis. [provided by RefSeq, Jul 2008]

Product images:



Circular map for MG200004