

## Product datasheet for **MERT501**

### TissueScan, Melanoma cDNA Array I

#### Product data:

|                 |  |
|-----------------|--|
| Product Type:   | TissueScan                               |
| Array Category: | Cancer Specific                          |
| Clinical Info:  | /assets/documents/tissuescan/mert501.xls |
| Diagnosis:      | Melanoma                                 |
| Tissue:         | Skin, Anus, Eye                          |
| Array Name:     | Melanoma cDNA Array I                    |

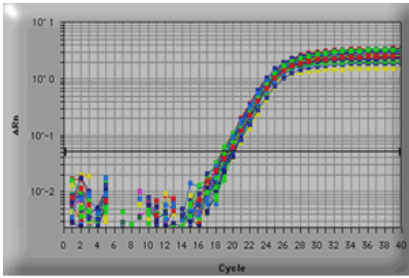
#### Product images:



TissueScan product image.

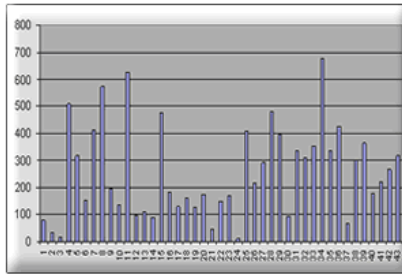


[View online »](#)



A Human Melanoma real time PCR Gene Expression panel used in real-time PCR. The beta-actin contents in the 43 human cDNAs were detected using SYBR Green I protocol and performed in PE7700.

Fluorescence reading - cycle number.



A Human Melanoma real time PCR Gene Expression panel was used in SYBR Green I based real-time PCR. The expression profile of the human Survivin transcript (ACC# NM\_001168) was detected using SYBR Green I protocol and performed in PE7700.

Normalized relative expression among 43 Melanoma samples