

Product datasheet for **MC207024**

Map2k3 (BC007467) Mouse Untagged Clone

Product data:

Product Type:	Expression Plasmids
Product Name:	Map2k3 (BC007467) Mouse Untagged Clone
Tag:	Tag Free
Symbol:	Map2k3
Synonyms:	MEK3, MKK3, mMKK3b
Mammalian Cell Selection:	Neomycin
Vector:	pCMV6-Entry (PS100001)
E. coli Selection:	Kanamycin (25 ug/mL)
Fully Sequenced ORF:	>MC207024 representing BC007467. Blue=ORF Red=Cloning site Green=Tag(s)

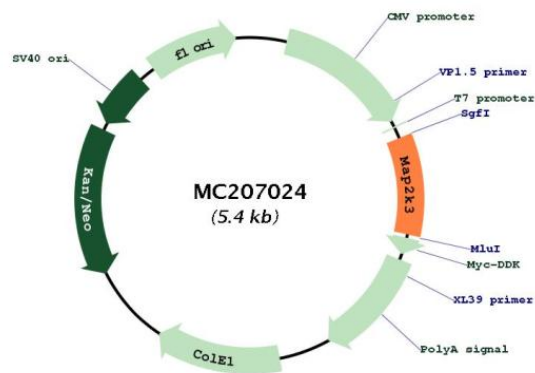
```
GCTCGTTTAGTGAACCGTCAGAATTTTGTAAACGACTCACTATAGGGCGCCGGGAATTCGTCGACTG
GATCCGGTACCGAGGAGATCTGCCGCCGCGATCGCC
ATGGAGTCGCCCGCCGAGCCCGCCGAGCTTGCCTCAGACCAAAGGAAAATCCAAAAGGAAAAAG
GACTTACGGATATCCTGCGTGTCCAAGCCACCTGTGTCCAACCCACACCCCCCGAACCTGGACTCC
CGGACCTTCATCACTATCGGAGACAGAACTTCGAAGTGGAGGCTGATGACTTGGTGACCATCTCAGAG
CTGGGTCGTGGAGCCTATGGGGTGGTAGAGAAAGTCCGGCATGCTCAGAGTGGTACCATCATGGCTGTC
AAGCGCATCCGGGCCACAGTGAACACACAGGAGCAGAAACGTCTGCTTATGGACCTAGACATCAACATG
CGCACGGTCGACTGCTTCTACACTGTCACCTTCTATGGTGCCTCTTCAGAGAGGGGGATGTATGGATC
TGCATGGAGCTCATGGACTTCCCTGGATAAGTTCTACCGGAAGGTGCTGGAGAAGAACATGAAAATT
CCGGAAGACATCCTGGGGGAGATCGCTGTGTCTATGTGA
ACGCGTACGCGGCCGCTCGAGCAGAACTCATCTCAGAAGAGGATCTGGCAGCAAATGATATCCTGGAT
TACAAGGATGACGACGATAAGGTTTAAACGGCCGCC
```

Restriction Sites: Sgfl-MluI



[View online »](#)

Plasmid Map:



ACCN: BC007467

Insert Size: 522 bp

OTI Disclaimer: Our molecular clone sequence data has been matched to the reference identifier above as a point of reference. Note that the complete sequence of our molecular clones may differ from the sequence published for this corresponding reference, e.g., by representing an alternative RNA splicing form or single nucleotide polymorphism (SNP).

Components: The ORF clone is ion-exchange column purified and shipped in a 2D barcoded Matrix tube containing 10ug of transfection-ready, dried plasmid DNA (reconstitute with 100 ul of water).

Reconstitution Method:

1. Centrifuge at 5,000xg for 5min.
2. Carefully open the tube and add 100ul of sterile water to dissolve the DNA.
3. Close the tube and incubate for 10 minutes at room temperature.
4. Briefly vortex the tube and then do a quick spin (less than 5000xg) to concentrate the liquid at the bottom.
5. Store the suspended plasmid at -20°C. The DNA is stable for at least one year from date of shipping when stored at -20°C.

RefSeq: [BC007467](#)

RefSeq Size: 2096 bp

RefSeq ORF: 521 bp

Locus ID: 26397

Cytogenetics: 11 B2

MW: 19.5 kDa

Gene Summary: Dual specificity kinase. Is activated by cytokines and environmental stress in vivo. Catalyzes the concomitant phosphorylation of a threonine and a tyrosine residue in the MAP kinase p38. Part of a signaling cascade that begins with the activation of the adrenergic receptor ADRA1B and leads to the activation of MAPK14.[UniProtKB/Swiss-Prot Function]