

Product datasheet for **LY705179**

B4galt4 (NM_019804) Mouse Over-expression Lysate

Product data:

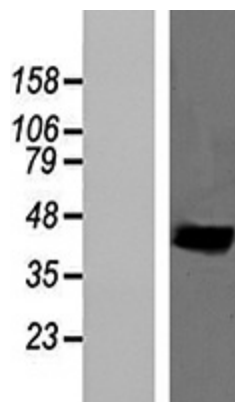
Product Type:	Over-expression Lysates
Description:	Transient overexpression lysate of Mouse UDP-Gal:betaGlcNAc beta 1,4-galactosyltransferase, polypeptide 4 (B4galt4)
Species:	Mouse
Expression Host:	HEK293T
Expression cDNA Clone or AA Sequence:	TrueORF Clone MR205179
Tag:	C-Myc/DDK
Detection Antibodies:	Clone OTI4C5, Anti-DDK (FLAG) monoclonal antibody (TA50011-100)
ACCN:	<u>NM_019804</u> , <u>NP_062778</u>
Synonyms:	9130402O08Rik; b4Gal-T4; B4galt-IV; beta4Gal-T4; beta4GalT-IV
Predicted MW:	39.7 kDa
Components:	1 vial of 100 µg gene specific transient over-expression cell lysate in RIPA buffer 1 vial of 100 µg whole HEK293T cell lysate in RIPA buffer 1 vial of 250ul 2xSDS Sample Buffer (4% SDS, 125mM Tris-HCl pH6.8, 10% Glycerol, 0.002% Bromophenol blue, 100mM DTT)
Storage:	The lysate is shipped with dry ice. Upon receiving, store the sample at -20°C. Avoid repeated freeze-thaw cycles. Lysate samples can be diluted with 2xSDS Sample Buffer provided. After dilution, the protein sample should be aliquoted and stored at -20°C for long term storage. Lysate samples are stable for 12 months from date of receipt when stored at -20°C.
Preparation:	HEK293T cells in 10-cm dishes were transiently transfected with <u>MegaTran</u> Transfection Reagent (TT200002) and 5ug <u>TrueORF</u> cDNA plasmid. Transfected cells were cultured for 48hrs before collection. The cells were lysed in modified RIPA buffer (25mM Tris-HCl pH7.6, 150mM NaCl, 1% NP-40, 1mM EDTA, 1xProteinase inhibitor cocktail mix (Sigma), 1mM PMSF and 1mM Na3VO4), and then centrifuged to clarify the lysate. Protein concentration was measured by BCA kit (Thermo Scientific Inc.). Cell lysates were aliquoted and stored at -20°C before shipping.
RefSeq:	<u>NP_062778</u>
Locus ID:	56375



[View online »](#)

Cytogenetics: 16 B4

Product images:



Western validation with an anti-DDK antibody; L:
Control HEK293 lysate R: Over-expression lysate