

## Product datasheet for **LY431766**

### Phospholipase A2 IIA (PLA2G2A) (NM\_001161728) Human Over-expression Lysate

#### Product data:

|                                       |   |
|---------------------------------------|---|
| Product Type:                         | Over-expression Lysates   |
| Description:                          | Transient overexpression lysate of phospholipase A2, group IIA (platelets, synovial fluid) (PLA2G2A), transcript variant 3  |
| Species:                              | Human   |
| Expression Host:                      | HEK293T   |
| Expression cDNA Clone or AA Sequence: | TrueORF Clone RC228738  |
| Tag:                                  | C-Myc/DDK   |
| Detection Antibodies:                 | Clone OTI4C5, Anti-DDK (FLAG) monoclonal antibody (TA50011-100)   |
| ACCN:                                 | <u>NM_001161728</u> , <u>NP_001155200</u>   |
| Synonyms:                             | MOM1; PLA2; PLA2B; PLA2L; PLA2S; PLAS1; sPLA2   |
| Predicted MW:                         | 16.1 kDa  |
| Components:                           | 1 vial of 100 µg gene specific transient over-expression cell lysate in RIPA buffer<br>1 vial of 100 µg whole HEK293T cell lysate in RIPA buffer<br>1 vial of 250ul 2xSDS Sample Buffer (4% SDS, 125mM Tris-HCl pH6.8, 10% Glycerol, 0.002% Bromophenol blue, 100mM DTT)  |
| Storage:                              | The lysate is shipped with dry ice. Upon receiving, store the sample at -80°C. Also after dilution, the protein sample should be aliquoted and stored at -80°C for long term storage. Avoid repeated freeze-thaw cycles. Lysate samples can be diluted with 2xSDS Sample Buffer provided. Lysate samples are stable for 12 months from the date of receipt when stored at -80°C.  |
| Preparation:                          | HEK293T cells in 10-cm dishes were transiently transfected with <u>MegaTran</u> Transfection Reagent (TT200002) and 5µg <u>TrueORF</u> cDNA plasmid. Transfected cells were cultured for 48hrs before collection. The cells were lysed in modified RIPA buffer (25mM Tris-HCl pH7.6, 150mM NaCl, 1% NP-40, 1mM EDTA, 1xProteinase inhibitor cocktail mix (Sigma), 1mM PMSF and 1mM Na3VO4), and then centrifuged to clarify the lysate. Protein concentration was measured by BCA kit (Thermo Scientific Inc.). |
| RefSeq:                               | <u>NP_001155200</u>   |
| Locus ID:                             | 5320  |



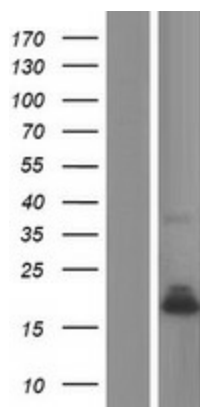
[View online »](#)

Cytogenetics: 1p36.13

Protein Families: WB

Protein Pathways: alpha-Linolenic acid metabolism, Arachidonic acid metabolism, Ether lipid metabolism, Fc epsilon RI signaling pathway, Glycerophospholipid metabolism, GnRH signaling pathway, Linoleic acid metabolism, Long-term depression, MAPK signaling pathway, Metabolic pathways, Vascular smooth muscle contraction, VEGF signaling pathway

### Product images:



Western blot validation of overexpression lysate (Cat# [LY431767]) using anti-DDK antibody (Cat# [TA50011-100]). Left: Cell lysates from untransfected HEK293T cells; Right: Cell lysates from HEK293T cells transfected with [RC228739] using transfection reagent MegaTran 2.0 (Cat# [TT210002]).