

## Product datasheet for **LY426307**

### **ERK1 (MAPK3) (NM\_001109891) Human Over-expression Lysate**

#### **Product data:**

|  |   |
|--|---|
| <b>Product Type:</b>                         | Over-expression Lysates   |
| <b>Description:</b>                          | Transient overexpression lysate of mitogen-activated protein kinase 3 (MAPK3), transcript variant 3   |
| <b>Species:</b>                              | Human   |
| <b>Expression Host:</b>                      | HEK293T   |
| <b>Expression cDNA Clone or AA Sequence:</b> | TrueORF Clone RC225492  |
| <b>Tag:</b>                                  | C-Myc/DDK   |
| <b>Detection Antibodies:</b>                 | Clone OTI4C5, Anti-DDK (FLAG) monoclonal antibody (TA50011-100)   |
| <b>ACCN:</b>                                 | <u>NM_001109891</u> , <u>NP_001103361</u>   |
| <b>Synonyms:</b>                             | ERK-1; ERK1; ERT2; HS44KDAP; HUMKER1A; p44-ERK1; p44-MAPK; P44ERK1; P44MAPK; PRKM3  |
| <b>Predicted MW:</b>                         | 38.1 kDa  |
| <b>Components:</b>                           | 1 vial of 100 µg gene specific transient over-expression cell lysate in RIPA buffer<br>1 vial of 100 µg whole HEK293T cell lysate in RIPA buffer<br>1 vial of 250ul 2xSDS Sample Buffer (4% SDS, 125mM Tris-HCl pH6.8, 10% Glycerol, 0.002% Bromophenol blue, 100mM DTT)  |
| <b>Storage:</b>                              | The lysate is shipped with dry ice. Upon receiving, store the sample at -80°C. Also after dilution, the protein sample should be aliquoted and stored at -80°C for long term storage. Avoid repeated freeze-thaw cycles. Lysate samples can be diluted with 2xSDS Sample Buffer provided. Lysate samples are stable for 12 months from the date of receipt when stored at -80°C.  |
| <b>Preparation:</b>                          | HEK293T cells in 10-cm dishes were transiently transfected with <u>MegaTran</u> Transfection Reagent (TT200002) and 5µg <u>TrueORE</u> cDNA plasmid. Transfected cells were cultured for 48hrs before collection. The cells were lysed in modified RIPA buffer (25mM Tris-HCl pH7.6, 150mM NaCl, 1% NP-40, 1mM EDTA, 1xProteinase inhibitor cocktail mix (Sigma), 1mM PMSF and 1mM Na3VO4), and then centrifuged to clarify the lysate. Protein concentration was measured by BCA kit (Thermo Scientific Inc.). |
| <b>RefSeq:</b>                               | <u>NP_001103361</u>   |
| <b>Locus ID:</b>                             | 5595  |



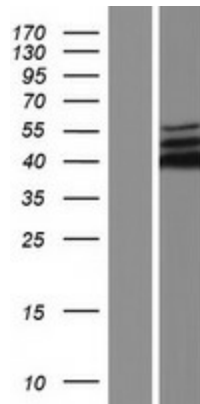
[View online »](#)

Cytogenetics: 16p11.2

Protein Families: WB

Protein Pathways: Acute myeloid leukemia, Adherens junction, Alzheimer's disease, Axon guidance, B cell receptor signaling pathway, Bladder cancer, Chemokine signaling pathway, Chronic myeloid leukemia, Colorectal cancer, Dorso-ventral axis formation, Endometrial cancer, ErbB signaling pathway, Fc epsilon RI signaling pathway, Fc gamma R-mediated phagocytosis, Focal adhesion, Gap junction, Glioma, GnRH signaling pathway, Insulin signaling pathway, Long-term depression, Long-term potentiation, MAPK signaling pathway, Melanogenesis, Melanoma, mTOR signaling pathway, Natural killer cell mediated cytotoxicity, Neurotrophin signaling pathway, NOD-like receptor signaling pathway, Non-small cell lung cancer, Oocyte meiosis, Pancreatic cancer, Pathways in cancer, Prion diseases, Progesterone-mediated oocyte maturation, Prostate cancer, Regulation of actin cytoskeleton, Renal cell carcinoma, T cell receptor signaling pathway, TGF-beta signaling pathway, Thyroid cancer, Toll-like receptor signaling pathway, Type II diabetes mellitus, Vascular smooth muscle contraction, VEGF signaling pathway

### Product images:



Western blot validation of overexpression lysate (Cat# LY426307) using anti-DDK antibody (Cat# [TA50011-100]). Left: Cell lysates from untransfected HEK293T cells; Right: Cell lysates from HEK293T cells transfected with [RC225492] using transfection reagent MegaTran 2.0 (Cat# [TT210002]).