

Product datasheet for **LY424802**

RB1 (NM_000321) Human Over-expression Lysate

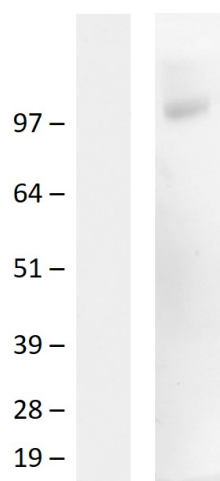
Product data:

Product Type:	Over-expression Lysates
Description:	Transient overexpression lysate of retinoblastoma 1 (RB1)
Species:	Human
Expression Host:	HEK293T
Expression cDNA Clone or AA Sequence:	TrueORF Clone RC206933
Tag:	C-Myc/DDK
Detection Antibodies:	Clone OTI4C5, Anti-DDK (FLAG) monoclonal antibody (TA50011-100)
ACCN:	<u>NM_000321</u> , <u>NP_000312</u>
Synonyms:	OSRC; p105-Rb; p110-RB1; pp110; PPP1R130; pRb; RB
Predicted MW:	106.6 kDa
Components:	<p>The lysate is shipped with dry ice. Upon receiving, store the sample at -20°C. Lysate samples are stable for 12 months from date of receipt when stored at -20°C. Avoid repeated freeze-thaw cycles.</p> <p>Lysate samples can be diluted with 2xSDS Sample Buffer provided. After dilution, the protein sample should be aliquoted and stored at -20°C for long term storage. Prior to SDS-PAGE fractionation, boil the lysate for 5 minutes.</p>
Storage:	<p>The lysate is shipped with dry ice. Upon receiving, store the sample at -80°C. Also after dilution, the protein sample should be aliquoted and stored at -80°C for long term storage. Avoid repeated freeze-thaw cycles. Lysate samples can be diluted with 2xSDS Sample Buffer provided. Lysate samples are stable for 12 months from the date of receipt when stored at -80°C.</p>
Preparation:	<p>HEK293T cells in 10-cm dishes were transiently transfected with MegaTran Transfection Reagent (TT200002) and 5ug TrueORF cDNA plasmid. Transfected cells were cultured for 48hrs before collection. The cells were lysed in modified RIPA buffer (25mM Tris-HCl pH7.6, 150mM NaCl, 1% NP-40, 1mM EDTA, 1xProteinase inhibitor cocktail mix (Sigma), 1mM PMSF and 1mM Na3VO4), and then centrifuged to clarify the lysate. Protein concentration was measured by BCA kit (Thermo Scientific Inc.). To facilitate transportation and protein, the products are supplied as lyophilized proteins.</p>



[View online »](#)

RefSeq:	NP_000312
Locus ID:	5925
Cytogenetics:	13q14.2
Protein Families:	Druggable Genome, Transcription Factors
Protein Pathways:	Bladder cancer, Cell cycle, Chronic myeloid leukemia, Glioma, Melanoma, Non-small cell lung cancer, Pancreatic cancer, Pathways in cancer, Prostate cancer, Small cell lung cancer

Product images:

Western blot validation of overexpression lysate (Cat# LY424802) using anti-DDK antibody (Cat# [TA50011-100]). Left: Cell lysates from untransfected HEK293T cells; Right: Cell lysates from HEK293T cells transfected with [RC206933] using transfection reagent PEI