

## Product datasheet for **LY423671**

### ErbB 3 (ERBB3) (NM\_001005915) Human Over-expression Lysate

#### Product data:

<b>Product Type:</b>	Over-expression Lysates
<b>Description:</b>	Transient overexpression lysate of v-erb-b2 erythroblastic leukemia viral oncogene homolog 3 (avian) (ERBB3), transcript variant s
<b>Species:</b>	Human
<b>Expression Host:</b>	HEK293T
<b>Expression cDNA Clone or AA Sequence:</b>	TrueORF Clone RC224398
<b>Tag:</b>	C-Myc/DDK
<b>Detection Antibodies:</b>	Clone OTI4C5, Anti-DDK (FLAG) monoclonal antibody (TA50011-100)
<b>ACCN:</b>	<u>NM_001005915</u> , <u>NP_001005915</u>
<b>Synonyms:</b>	c-erbB-3; c-erbB3; ErbB-3; erbB3-S; FERLK; HER3; LCCS2; MDA-BF-1; p45-sErbB3; p85-sErbB3; p180-ErbB3
<b>Predicted MW:</b>	20.17 kDa
<b>Components:</b>	1 vial of 100 µg gene specific transient over-expression cell lysate in RIPA buffer 1 vial of 100 µg whole HEK293T cell lysate in RIPA buffer 1 vial of 250ul 2xSDS Sample Buffer (4% SDS, 125mM Tris-HCl pH6.8, 10% Glycerol, 0.002% Bromophenol blue, 100mM DTT)
<b>Storage:</b>	The lysate is shipped with dry ice. Upon receiving, store the sample at -80°C. Also after dilution, the protein sample should be aliquoted and stored at -80°C for long term storage. Avoid repeated freeze-thaw cycles. Lysate samples can be diluted with 2xSDS Sample Buffer provided. Lysate samples are stable for 12 months from the date of receipt when stored at -80°C.
<b>Preparation:</b>	HEK293T cells in 10-cm dishes were transiently transfected with <u>MegaTran</u> Transfection Reagent (TT200002) and 5ug <u>TrueORE</u> cDNA plasmid. Transfected cells were cultured for 48hrs before collection. The cells were lysed in modified RIPA buffer (25mM Tris-HCl pH7.6, 150mM NaCl, 1% NP-40, 1mM EDTA, 1xProteinase inhibitor cocktail mix (Sigma), 1mM PMSF and 1mM Na3VO4), and then centrifuged to clarify the lysate. Protein concentration was measured by BCA kit (Thermo Scientific Inc.).
<b>RefSeq:</b>	<u>NP_001005915</u>



[View online »](#)

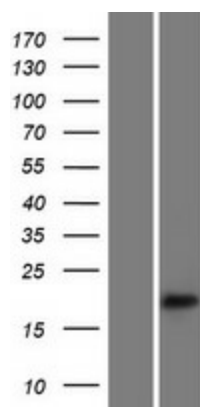
Locus ID: 2065

Cytogenetics: 12q13.2

Protein Families: WB

Protein Pathways: Calcium signaling pathway, Endocytosis, ErbB signaling pathway

### Product images:



Western blot validation of overexpression lysate (Cat# LY423671) using anti-DDK antibody (Cat# [TA50011-100]). Left: Cell lysates from untransfected HEK293T cells; Right: Cell lysates from HEK293T cells transfected with [RC224398] using transfection reagent MegaTran 2.0 (Cat# [TT210002]).