

Product datasheet for **LY417653**

ROCK2 (NM_004850) Human Over-expression Lysate

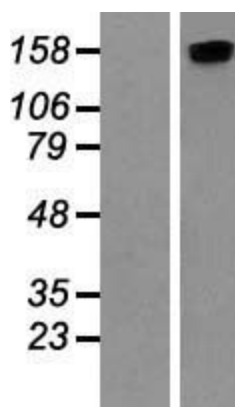
Product data:

| | |
|---------------------------------------|--|
| Product Type: | Over-expression Lysates |
| Description: | Transient overexpression lysate of Rho-associated, coiled-coil containing protein kinase 2 (ROCK2) |
| Species: | Human |
| Expression Host: | HEK293T |
| Expression cDNA Clone or AA Sequence: | TrueORF Clone RC217764 |
| Tag: | C-Myc/DDK |
| Detection Antibodies: | Clone OTI4C5, Anti-DDK (FLAG) monoclonal antibody (TA50011-100) |
| ACCN: | NM_004850 , NP_004841 |
| Synonyms: | ROCK-II |
| Predicted MW: | 160.7 kDa |
| Components: | 1 vial of 100 µg gene specific transient over-expression cell lysate in RIPA buffer 1 vial of 100 µg whole HEK293T cell lysate in RIPA buffer 1 vial of 250ul 2xSDS Sample Buffer (4% SDS, 125mM Tris-HCl pH6.8, 10% Glycerol, 0.002% Bromophenol blue, 100mM DTT) |
| Storage: | The lysate is shipped with dry ice. Upon receiving, store the sample at -80°C. Also after dilution, the protein sample should be aliquoted and stored at -80°C for long term storage. Avoid repeated freeze-thaw cycles. Lysate samples can be diluted with 2xSDS Sample Buffer provided. Lysate samples are stable for 12 months from the date of receipt when stored at -80°C. |
| Preparation: | HEK293T cells in 10-cm dishes were transiently transfected with MegaTran Transfection Reagent (TT200002) and 5ug TrueORE cDNA plasmid. Transfected cells were cultured for 48hrs before collection. The cells were lysed in modified RIPA buffer (25mM Tris-HCl pH7.6, 150mM NaCl, 1% NP-40, 1mM EDTA, 1xProteinase inhibitor cocktail mix (Sigma), 1mM PMSF and 1mM Na3VO4), and then centrifuged to clarify the lysate. Protein concentration was measured by BCA kit (Thermo Scientific Inc.). Cell lysates were aliquoted and stored at -20°C before shipping. |
| RefSeq: | NP_004841 |



[View online »](#)

| | |
|-------------------|--|
| Locus ID: | 9475 |
| Cytogenetics: | 2p25.1 |
| Protein Families: | Druggable Genome, Protein Kinase |
| Protein Pathways: | Axon guidance, Chemokine signaling pathway, Focal adhesion, Leukocyte transendothelial migration, Pathogenic Escherichia coli infection, Regulation of actin cytoskeleton, TGF-beta signaling pathway, Vascular smooth muscle contraction, Wnt signaling pathway |

Product images:

Western blot validation of overexpression lysate (Cat# LY417653) using anti-DDK antibody (Cat# [TA50011-100]). Left: Cell lysates from untransfected HEK293T cells; Right: Cell lysates from HEK293T cells transfected with [RC217764] using transfection reagent MegaTran 2.0 (Cat# [TT210002]).