

Product datasheet for **LY413748**

Eph receptor B2 (EPHB2) (NM_017449.4) Human Over-expression Lysate

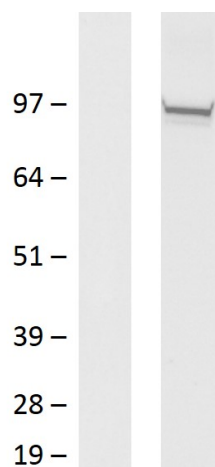
Product data:

| | |
|---------------------------------------|---|
| Product Type: | Over-expression Lysates |
| Description: | Transient overexpression lysate of human EPH receptor B2 (EPHB2) |
| Species: | Human |
| Expression Host: | HEK293T |
| Expression cDNA Clone or AA Sequence: | TrueORF Clone RC223219 |
| Tag: | C-MYC/DDK |
| ACCN: | NM_017449.4 |
| Predicted MW: | 109.87 kDa |
| Components: | 1 vial of 100 µg gene specific transient over-expression cell lysate in RIPA buffer 1 vial of 100 µg empty vector transfected control cell lysate in RIPA buffer 1 vial of 250ul 2xSDS Sample Buffer (4% SDS, 125mM Tris-HCl pH6.8, 10% Glycerol, 0.002% Bromphenol blue, 100mM DTT) |
| Storage: | The lysate is shipped with dry ice. Upon receiving, store the sample at -80°C. Avoid repeated freeze-thaw cycles. Lysate samples are stable for 12 months from the date of receipt when stored at -80°C. |
| Preparation: | HEK293T cells in 10-cm dishes were transiently transfected with PEI and 5ug TrueORF cDNA plasmid. Transfected cells were cultured for 72hrs before collection. The cells were lysed in modified RIPA buffer (25mM Tris-HCl pH7.6, 150mM NaCl, 1% NP-40, 1mM EDTA, 1xProteinase inhibitor cocktail mix (Sigma), 1mM PMSF and 1mM Na3VO4), and then centrifuged to clarify the lysate. Protein concentration was measured by BCA kit (Thermo Scientific Inc.). Cell lysates were aliquoted and stored at -80°C before shipping. |
| Locus ID: | 2048 |
| Cytogenetics: | 1p36.12 |
| Protein Families: | Druggable Genome, Protein Kinase, Transmembrane |
| Protein Pathways: | Axon guidance |



[View online »](#)

Product images:



Western blot validation of overexpression lysate (Cat# LY413748) using anti-DDK antibody (Cat# [TA50011-100]). Left: Cell lysates from untransfected HEK293T cells; Right: Cell lysates from HEK293T cells transfected with [RC223219] using transfection reagent MegaTran 2.0 (Cat# [TT210002]).