

Product datasheet for **LY411252**

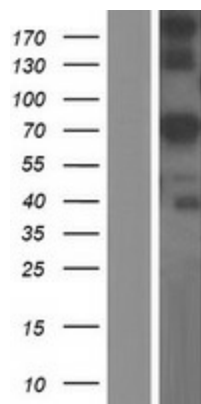
GLB1L (NM_024506) Human Over-expression Lysate

Product data:

Product Type:	Over-expression Lysates
Description:	Transient overexpression lysate of galactosidase, beta 1-like (GLB1L)
Species:	Human
Expression Host:	HEK293T
Expression cDNA Clone or AA Sequence:	TrueORF Clone RC213612
Tag:	C-Myc/DDK
Detection Antibodies:	Clone OTI4C5, Anti-DDK (FLAG) monoclonal antibody (TA50011-100)
ACCN:	NM_024506 , NP_078782
Predicted MW:	74.6 kDa
Components:	1 vial of 100 µg gene specific transient over-expression cell lysate in RIPA buffer 1 vial of 100 µg whole HEK293T cell lysate in RIPA buffer 1 vial of 250ul 2xSDS Sample Buffer (4% SDS, 125mM Tris-HCl pH6.8, 10% Glycerol, 0.002% Bromophenol blue, 100mM DTT)
Storage:	The lysate is shipped with dry ice. Upon receiving, store the sample at -80°C. Also after dilution, the protein sample should be aliquoted and stored at -80°C for long term storage. Avoid repeated freeze-thaw cycles. Lysate samples can be diluted with 2xSDS Sample Buffer provided. Lysate samples are stable for 12 months from the date of receipt when stored at -80°C.
Preparation:	HEK293T cells in 10-cm dishes were transiently transfected with MegaTran Transfection Reagent (TT200002) and 5ug TrueORF cDNA plasmid. Transfected cells were cultured for 48hrs before collection. The cells were lysed in modified RIPA buffer (25mM Tris-HCl pH7.6, 150mM NaCl, 1% NP-40, 1mM EDTA, 1xProteinase inhibitor cocktail mix (Sigma), 1mM PMSF and 1mM Na3VO4), and then centrifuged to clarify the lysate. Protein concentration was measured by BCA kit (Thermo Scientific Inc.). Cell lysates were aliquoted and stored at -20°C before shipping.
RefSeq:	NP_078782
Locus ID:	79411
Cytogenetics:	2q35



[View online »](#)

Product images:

Western blot validation of overexpression lysate (Cat# LY411252) using anti-DDK antibody (Cat# [TA50011-100]). Left: Cell lysates from untransfected HEK293T cells; Right: Cell lysates from HEK293T cells transfected with [RC213612] using transfection reagent MegaTran 2.0 (Cat# [TT210002]).