

Product datasheet for **LY300511**

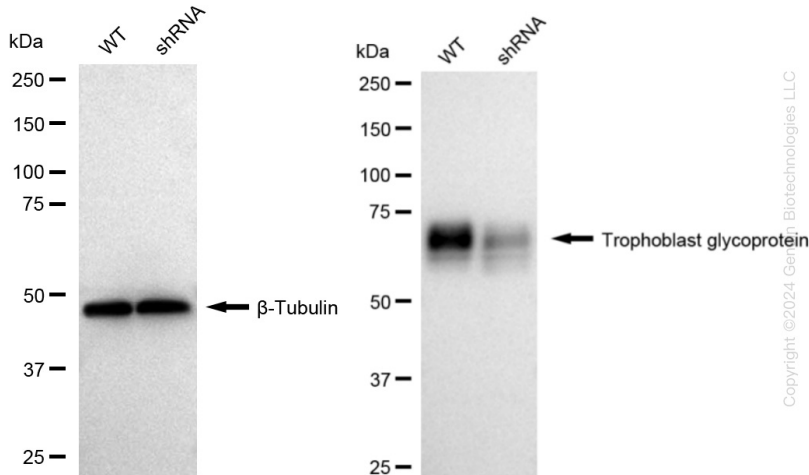
5T4 (TPBG) Human Knockdown Lysate

Product data:

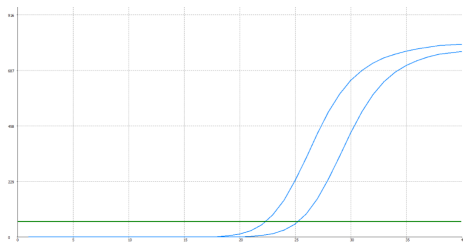
Product Type:	Knockdown Lysates
Description:	WB-validated TPBG Knockdown HT-1080 Cell Lysate
Species:	Human
Tag:	Tag Free
Synonyms:	TPBG; Trophoblast Glycoprotein; 5T4; 5T4 Oncofetal Trophoblast Glycoprotein; Wnt-Activated Inhibitory Factor 1; 5T4 Oncotrophoblast Glycoprotein; 5T4 Oncofetal Antigen; 5T4-AG; WAIF1; M6P1; 5T4AG
Predicted MW:	46 kDa
Components:	1 vial of 100 ug WT HT-1080 cell lysate 1 vial of 100 ug TPBG KD HT-1080 cell lysate
Storage:	Store at -20 °C for two years.
Concentration:	Lot-specific
Buffer:	IntactProtein Cell-Tissue Lysis buffer
Locus ID:	7162
UniProt ID:	Q13641
Protein Families:	Transmembrane

[View online »](#)

Product images:



Western blotting analysis. TPBG protein expression in wild-type (WT) and shRNA knockdown (KD) HT-1080 cells was detected using Western blotting. β-Tubulin served as a loading control. The blots were incubated with primary antibodies against TPBG and β-Tubulin, respectively, followed by incubating with HRP-conjugated goat anti-rabbit secondary antibody. Images were developed using FeQ™ ECL Substrate Kit.



Genotype	Ct Value
Wild-Type	22.13
Knock-Down	24.99
ΔCt ($Ct_{KD} - Ct_{WT}$)	2.86
% mRNA Reduction	↓ 86%

RT-qPCR analysis. HT-1080 cells were infected with TPBG-specific shRNA lentiviral particles, total RNA was extracted from wild-type and knockdown cells, RT-qPCR was performed using gene-specific primers. ΔCt ($Ct_{KD} - Ct_{WT}$) was used to calculate mRNA reduction (%) between wild-type and knockdown cells using the following formula: $(1 - 1/2^{\Delta Ct}) \times 100\%$.