

Product datasheet for **LY300411**

PWP1 Human Knockdown Lysate

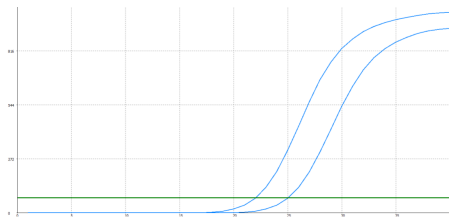
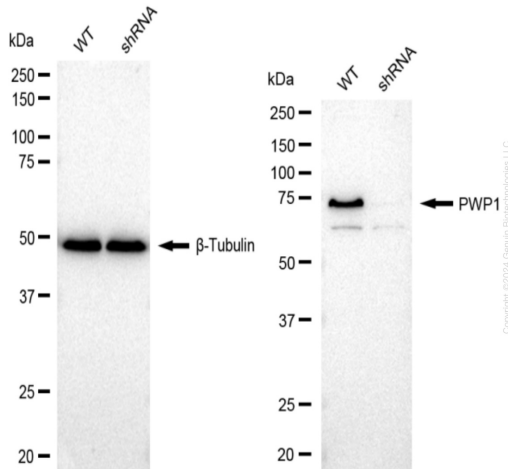
Product data:

Product Type:	Knockdown Lysates
Description:	WB-validated PWP1 Knockdown HeLa Cell Lysate
Species:	Human
Expression Host:	HeLa
Tag:	Tag Free
Synonyms:	PWP1; PWP1 Homolog, Endonuclein; IEF-SSP-9502; Periodic Tryptophan Protein 1 Homolog; Keratinocyte Protein IEF SSP 9502; Endonuclein; Nuclear Phosphoprotein Similar To S. Cerevisiae PWP1; PWP1 Homolog (S. Cerevisiae); NCLB
Predicted MW:	56 kDa
Components:	1 vial of 100 ug WT HeLa cell lysate 1 vial of 100 ug PWP1 KD HeLa cell lysate
Storage:	Store at -20 °C for two years.
Concentration:	Lot-specific
Buffer:	IntactProtein Cell-Tissue Lysis buffer
Locus ID:	11137
UniProt ID:	Q13610
Protein Families:	Transcription Factors



[View online »](#)

Product images:



Genotype	Ct Value
Wild-Type	21.95
Knock-Down	24.79
Δ Ct (Ct _{KD} -Ct _{WT})	2.84
% mRNA Reduction	↓ 86%

RT-qPCR analysis. HeLa cells were infected with PWP1-specific shRNA lentiviral particles, total RNA was extracted from wild-type and knockdown cells, RT-qPCR was performed using gene-specific primers. Δ Ct (Ct_{KD}-Ct_{WT}) was used to calculate mRNA reduction (%) between wild-type and knockdown cells using the following formula: $(1 - 1/2^{\Delta\text{Ct}}) \times 100\%$.