

Product datasheet for **LY300394**

PON2 Human Knockdown Lysate

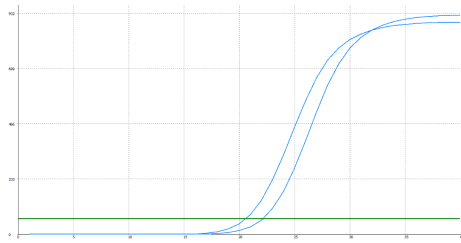
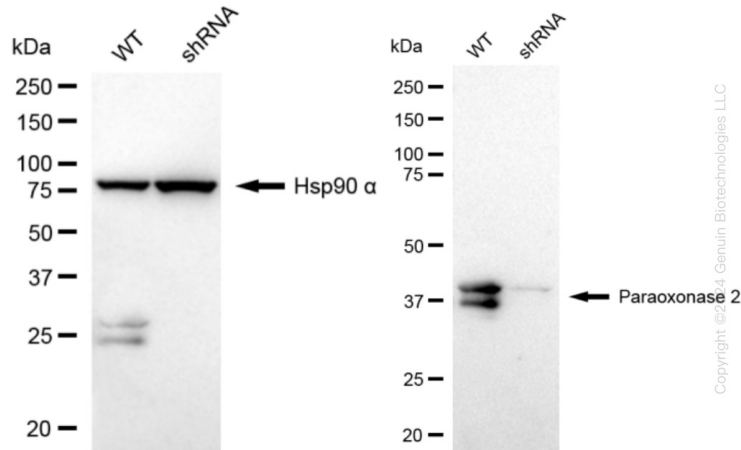
Product data:

Product Type:	Knockdown Lysates
Description:	WB-validated PON2 Knockdown HeLa Cell Lysate
Species:	Human
Expression Host:	HeLa
Tag:	Tag Free
Synonyms:	Paraoxonase 2; Serum Paraoxonase/Arylesterase 2; Serum Aryldialkylphosphatase 2; Aromatic Esterase 2; Paraoxonase Nirs; Arylesterase 2; A-Esterase 2; PON 2; EC 3.1.1.81; EC 3.1.1.2
Predicted MW:	39 kDa
Components:	1 vial of 100 ug WT HeLa cell lysate 1 vial of 100 ug PON2 KD HeLa cell lysate
Storage:	Store at -20 °C for two years.
Concentration:	Lot-specific
Buffer:	IntactProtein Cell-Tissue Lysis buffer
Locus ID:	5445
UniProt ID:	Q15165
Protein Families:	Druggable Genome
Protein Pathways:	Metabolic pathways



[View online »](#)

Product images:



Genotype	Ct Value
Wild-Type	20.50
Knock-Down	22.13
$\Delta Ct (Ct_{KD} - Ct_{WT})$	1.63
% mRNA Reduction	↓ 68%

Copyright ©2024 Genuin Biotechnologies LLC

RT-qPCR analysis. HeLa cells were infected with PON2-specific shRNA lentiviral particles, total RNA was extracted from wild-type and knockdown cells, RT-qPCR was performed using gene-specific primers. $\Delta Ct (Ct_{KD} - Ct_{WT})$ was used to calculate mRNA reduction (%) between wild-type and knockdown cells using the following formula: $(1 - 1/2^{\Delta Ct}) \times 100\%$.