

## Product datasheet for **LY300355**

### c-Jun (JUN) Human Knockdown Lysate

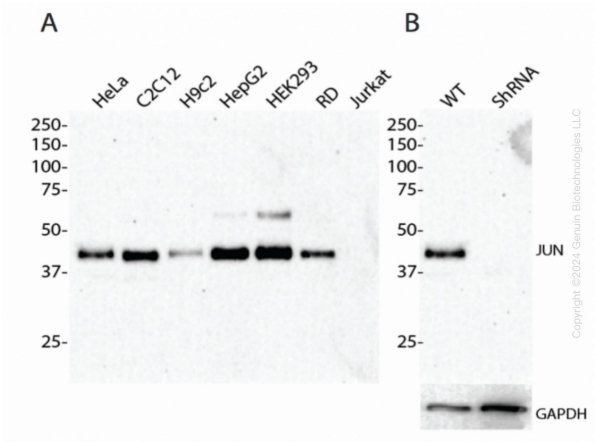
#### Product data:

Product Type:	Knockdown Lysates
Description:	WB-validated JUN Knockdown HeLa Cell Lysate
Species:	Human
Expression Host:	HeLa
Tag:	Tag Free
Synonyms:	JUN; Jun Proto-Oncogene, AP-1 Transcription Factor Subunit; V-Jun Avian Sarcoma Virus 17 Oncogene Homolog; AP-1; Transcription Factor AP-1 Subunit Jun; Transcription Factor Jun; Proto-Oncogene C-Jun; Activator Protein 1; Jun Oncogene; C-Jun; AP1; P39; V-Jun Sarcoma Virus 17 Oncogene Homolog; Jun Activation Domain Binding Protein; Enhancer-Binding Protein AP1; Transcription Factor AP-1; Proto-Oncogene CJun; C-JUN; CJUN
Predicted MW:	36 kDa
Components:	1 vial of 100 ug WT HeLa cell lysate 1 vial of 100 ug JUN KD HeLa cell lysate
Storage:	Store at -20 °C for two years.
Concentration:	Lot-specific
Buffer:	IntactProtein Cell-Tissue Lysis buffer
Locus ID:	3725
UniProt ID:	<a href="#">P05412</a>
Protein Families:	Druggable Genome, ES Cell Differentiation/IPS, Transcription Factors
Protein Pathways:	B cell receptor signaling pathway, Colorectal cancer, Epithelial cell signaling in Helicobacter pylori infection, ErbB signaling pathway, Focal adhesion, GnRH signaling pathway, MAPK signaling pathway, Neurotrophin signaling pathway, Pathways in cancer, Renal cell carcinoma, T cell receptor signaling pathway, Toll-like receptor signaling pathway, Wnt signaling pathway

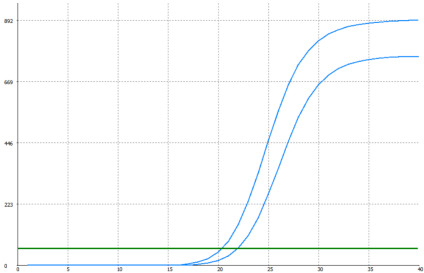


[View online »](#)

Product images:



Western blotting analysis. JUN protein expression in wild-type (WT) and shRNA knockdown (KD) HeLa cells was detected using Western blotting. GAPDH served as a loading control. The blots were incubated with primary antibodies against JUN and GAPDH, respectively, followed by incubating with HRP-conjugated goat anti-rabbit secondary antibody. Images were developed using FeQ™ ECL Substrate Kit.



Genotype	Ct Value
Wild-Type	20.4
Knock-Down	21.7
$\Delta Ct (Ct_{KD} - Ct_{WT})$	1.3
% mRNA Reduction	↓59%

RT-qPCR analysis. HeLa cells were infected with JUN-specific shRNA lentiviral particles, total RNA was extracted from wild-type and knockdown cells, RT-qPCR was performed using gene-specific primers.  $\Delta Ct (Ct_{KD} - Ct_{WT})$  was used to calculate mRNA reduction (%) between wild-type and knockdown cells using the following formula:  $(1 - 1/2^{\Delta Ct}) \times 100\%$ .