

Product datasheet for **LY300304**

Syntaxin 16 (STX16) Human Knockdown Lysate

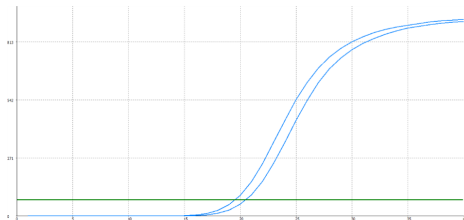
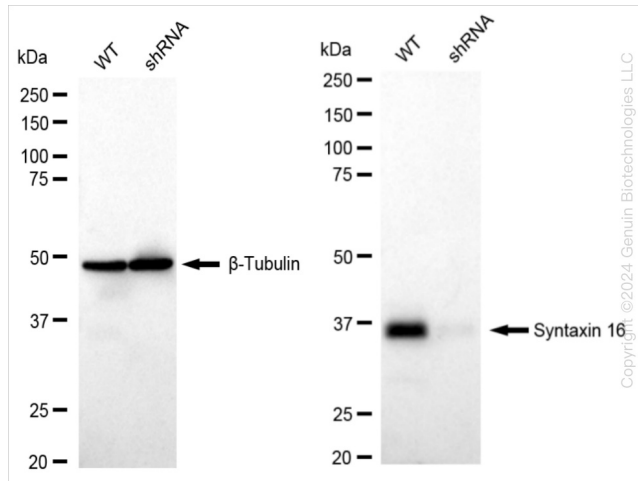
Product data:

Product Type:	Knockdown Lysates
Description:	WB-validated STX16 Knockdown HeLa Cell Lysate
Species:	Human
Expression Host:	HeLa
Tag:	Tag Free
Synonyms:	STX16; Syntaxin 16; SYN-16; SYN16; Syntaxin-16; Hsyn16; HSYN16; Syn16
Predicted MW:	37 kDa
Components:	1 vial of 100 ug WT HeLa cell lysate 1 vial of 100 ug STX16 KD HeLa cell lysate
Storage:	Store at -20 °C for two years.
Concentration:	Lot-specific
Buffer:	IntactProtein Cell-Tissue Lysis buffer
Locus ID:	8675
UniProt ID:	Q14662
Protein Families:	Druggable Genome, Transmembrane
Protein Pathways:	SNARE interactions in vesicular transport



[View online »](#)

Product images:



Genotype	Ct Value
Wild-Type	19.28
Knock-Down	20.22
Δ Ct (Ct _{KD} -Ct _{WT})	0.94
% mRNA Reduction	↓ 48%

RT-qPCR analysis. HeLa cells were infected with STX16-specific shRNA lentiviral particles, total RNA was extracted from wild-type and knockdown cells, RT-qPCR was performed using gene-specific primers. Δ Ct (Ct_{KD}-Ct_{WT}) was used to calculate mRNA reduction (%) between wild-type and knockdown cells using the following formula: $(1 - 1/2^{\Delta\text{Ct}}) \times 100\%$.