

Product datasheet for **LY300272**

PLAA Human Knockdown Lysate

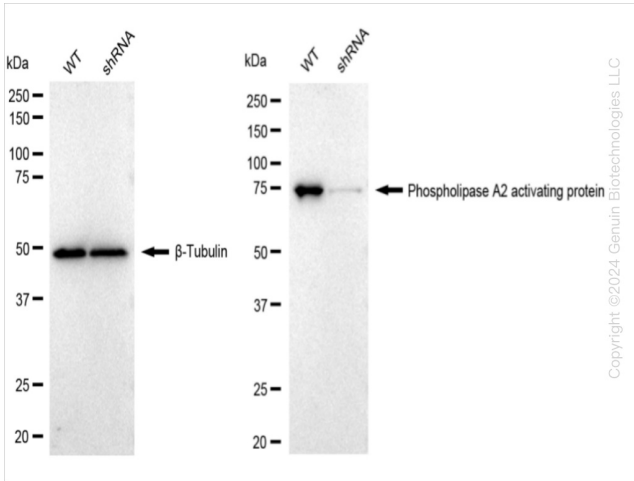
Product data:

Product Type:	Knockdown Lysates
Description:	WB-validated PLAA Knockdown HeLa Cell Lysate
Species:	Human
Expression Host:	HeLa
Tag:	Tag Free
Synonyms:	PLAA; Phospholipase A2 Activating Protein; PLA2P; PLAP; DOA1; Phospholipase A-2-Activating Protein; FLJ11281; FLJ12699; DOA1 Homolog (S. Cerevisiae); DOA1 Homolog; NDMSBA
Predicted MW:	87 kDa
Components:	1 vial of 100 ug WT HeLa cell lysate 1 vial of 100 ug PLAA KD HeLa cell lysate
Storage:	Store at -20 °C for two years.
Concentration:	Lot-specific
Buffer:	IntactProtein Cell-Tissue Lysis buffer
Locus ID:	9373
UniProt ID:	<u>Q9Y263</u>

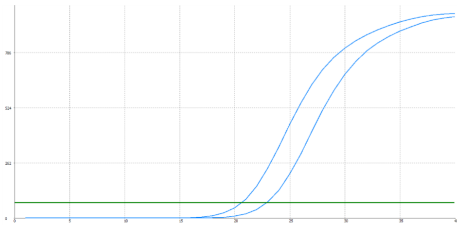


[View online »](#)

Product images:



Western blotting analysis. PLAA protein expression in wild-type (WT) and shRNA knockdown (KD) HeLa cells was detected using Western blotting. β -Tubulin served as a loading control. The blots were incubated with primary antibodies against PLAA and β -Tubulin, respectively, followed by incubating with HRP-conjugated goat anti-rabbit secondary antibody. Images were developed using FeQ™ ECL Substrate Kit.



Genotype	Ct Value
Wild-Type	20.50
Knock-Down	22.77
Δ Ct (Ct _{KD} -Ct _{WT})	2.27
% mRNA Reduction	↓ 79%

RT-qPCR analysis. HeLa cells were infected with PLAA-specific shRNA lentiviral particles, total RNA was extracted from wild-type and knockdown cells, RT-qPCR was performed using gene-specific primers. Δ Ct (Ct_{KD}-Ct_{WT}) was used to calculate mRNA reduction (%) between wild-type and knockdown cells using the following formula: $(1 - 1/2^{\Delta\text{Ct}}) \times 100\%$.