

Product datasheet for **LY300245**

MSI2 Human Knockdown Lysate

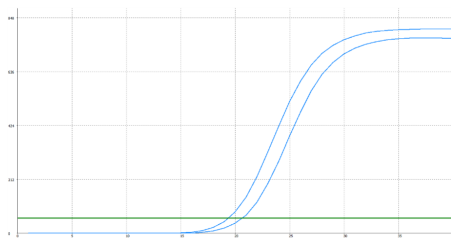
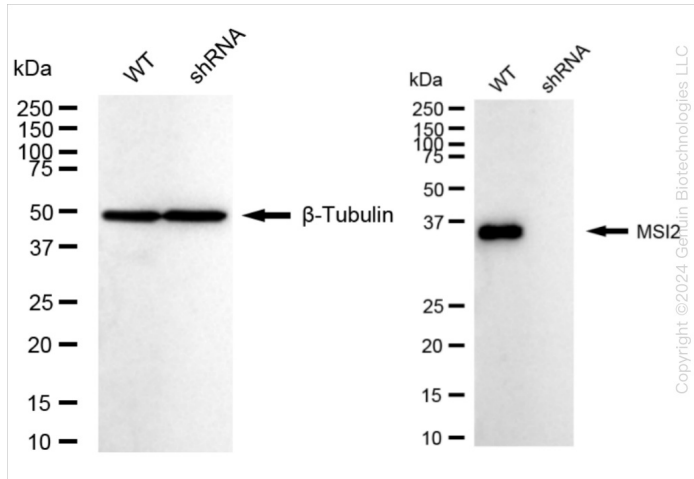
Product data:

Product Type:	Knockdown Lysates
Description:	WB-validated MSI2 Knockdown HeLa Cell Lysate
Species:	Human
Expression Host:	HeLa
Tag:	Tag Free
Synonyms:	Musashi RNA Binding Protein 2; RNA-Binding Protein Musashi Homolog 2; Musashi-2; Musashi Homolog 2 (Drosophila); Musashi Homolog 2; MSI2H
Predicted MW:	35 kDa
Components:	1 vial of 100 ug WT HeLa cell lysate 1 vial of 100 ug MSI2 KD HeLa cell lysate
Storage:	Store at -20 °C for two years.
Concentration:	Lot-specific
Buffer:	IntactProtein Cell-Tissue Lysis buffer
Locus ID:	124540
UniProt ID:	<u>Q96DH6</u>



[View online »](#)

Product images:



Genotype	Ct Value
Wild-Type	19.29
Knock-Down	20.47
Δ Ct (Ct _{KD} -Ct _{WT})	1.18
% mRNA Reduction	↓ 56%

RT-qPCR analysis. HeLa cells were infected with MSI2-specific shRNA lentiviral particles, total RNA was extracted from wild-type and knockdown cells, RT-qPCR was performed using gene-specific primers. Δ Ct (Ct_{KD}-Ct_{WT}) was used to calculate mRNA reduction (%) between wild-type and knockdown cells using the following formula: $(1 - 1/2^{\Delta\text{Ct}}) \times 100\%$.

Copyright ©2024 Genun Biotechnologies LLC