

Product datasheet for **LY300236**

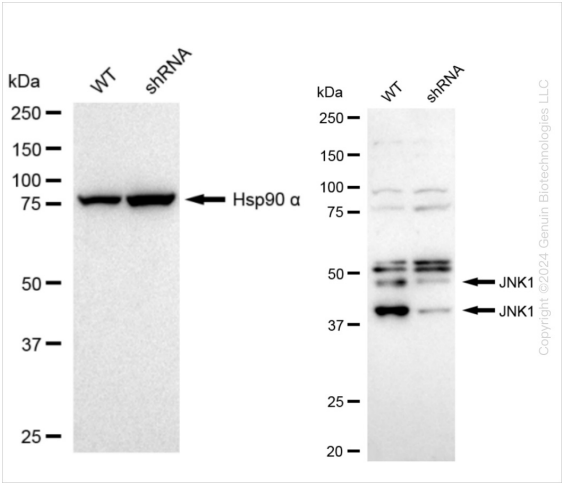
JNK1 (MAPK8) Human Knockdown Lysate

Product data:

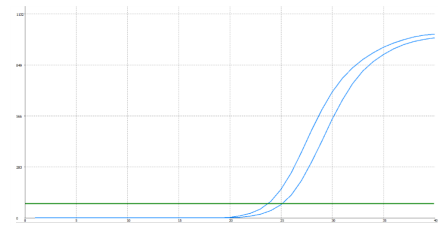
Product Type:	Knockdown Lysates
Description:	WB-validated MAPK8 Knockdown HeLa Cell Lysate
Species:	Human
Expression Host:	HeLa
Tag:	Tag Free
Synonyms:	MAPK8; Mitogen-Activated Protein Kinase 8; SAPK1; JNK1; PRKM8; JNK; Stress-Activated Protein Kinase 1c; C-Jun N-Terminal Kinase 1; JUN N-Terminal Kinase; MAP Kinase 8; EC 2.7.11.24; JNK-46; SAPK1c; Stress-Activated Protein Kinase JNK1; Stress-Activated Protein Kinase 1; JNK21B1/2; EC 2.7.11; JNK1A2; SAPK1C; MAPK 8
Predicted MW:	48 kDa
Components:	1 vial of 100 ug WT HeLa cell lysate 1 vial of 100 ug MAPK8 KD HeLa cell lysate
Storage:	Store at -20 °C for two years.
Concentration:	Lot-specific
Buffer:	IntactProtein Cell-Tissue Lysis buffer
Locus ID:	5599
UniProt ID:	P45983
Protein Families:	Druggable Genome, ES Cell Differentiation/IPS, Protein Kinase
Protein Pathways:	Adipocytokine signaling pathway, Colorectal cancer, Epithelial cell signaling in Helicobacter pylori infection, ErbB signaling pathway, Fc epsilon RI signaling pathway, Focal adhesion, GnRH signaling pathway, Insulin signaling pathway, MAPK signaling pathway, Neurotrophin signaling pathway, NOD-like receptor signaling pathway, Pancreatic cancer, Pathways in cancer, Progesterone-mediated oocyte maturation, RIG-I-like receptor signaling pathway, Toll-like receptor signaling pathway, Type II diabetes mellitus, Wnt signaling pathway


[View online »](#)

Product images:



Western blotting analysis. MAPK8 protein expression in wild-type (WT) and shRNA knockdown (KD) HeLa cells was detected using Western blotting. Hsp90 α served as a loading control. The blots were incubated with primary antibodies against MAPK8 and Hsp90 α, respectively, followed by incubating with HRP-conjugated goat anti-rabbit secondary antibody. Images were developed using FeQ™ ECL Substrate Kit.



Genotype	Ct Value
Wild-Type	23.53
Knock-Down	24.91
$\Delta Ct (Ct_{KD} - Ct_{WT})$	1.38
% mRNA Reduction	↓ 62%

Copyright ©2024 Genuin Biotechnologies LLC

RT-qPCR analysis. HeLa cells were infected with MAPK8-specific shRNA lentiviral particles, total RNA was extracted from wild-type and knockdown cells, RT-qPCR was performed using gene-specific primers. $\Delta Ct (Ct_{KD} - Ct_{WT})$ was used to calculate mRNA reduction (%) between wild-type and knockdown cells using the following formula: $(1 - 1/2^{\Delta Ct}) \times 100\%$.