

## Product datasheet for **LY300224**

### Galectin 3 (LGALS3) Human Knockdown Lysate

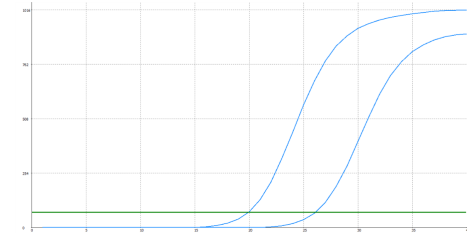
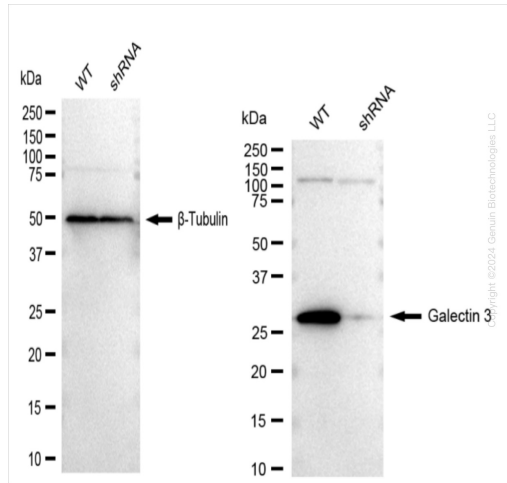
#### Product data:

Product Type:	Knockdown Lysates
Description:	WB-validated LGALS3 Knockdown HeLa Cell Lysate
Species:	Human
Expression Host:	HeLa
Tag:	Tag Free
Synonyms:	LGALS3; Galectin 3; GALIG; Advanced Glycation End-Product Receptor 3; Lectin, Galactoside-Binding, Soluble, 3; Carbohydrate-Binding Protein 35; Galactose-Specific Lectin 3; Laminin-Binding Protein; IgE-Binding Protein; 35 KDa Lectin; Lectin L-29; Galectin-3; LGALS2; MAC-2; GALBP; MAC2; Epididymis Secretory Sperm Binding Protein; Galactoside-Binding Protein; MAC-2 Antigen; Mac-2; Antigen; CBP 35; CBP35; Gal-3; GAL3; L-31; L31
Predicted MW:	26 kDa
Components:	1 vial of 100 ug WT HeLa cell lysate 1 vial of 100 ug LGALS3 KD HeLa cell lysate
Storage:	Store at -20 °C for two years.
Concentration:	Lot-specific
Buffer:	IntactProtein Cell-Tissue Lysis buffer
Locus ID:	3958
UniProt ID:	<a href="#">P17931</a>
Protein Families:	Secreted Protein



[View online »](#)

Product images:



Genotype	Ct Value
Wild-Type	19.96
Knock-Down	25.91
$\Delta$ Ct (Ct <sub>KD</sub> -Ct <sub>WT</sub> )	5.95
% mRNA Reduction	↓ 98%

RT-qPCR analysis. HeLa cells were infected with LGALS3-specific shRNA lentiviral particles, total RNA was extracted from wild-type and knockdown cells, RT-qPCR was performed using gene-specific primers.  $\Delta$ Ct (Ct<sub>KD</sub>-Ct<sub>WT</sub>) was used to calculate mRNA reduction (%) between wild-type and knockdown cells using the following formula:  $(1 - 1/2^{\Delta\text{Ct}}) \times 100\%$ .