

## Product datasheet for **LY300200**

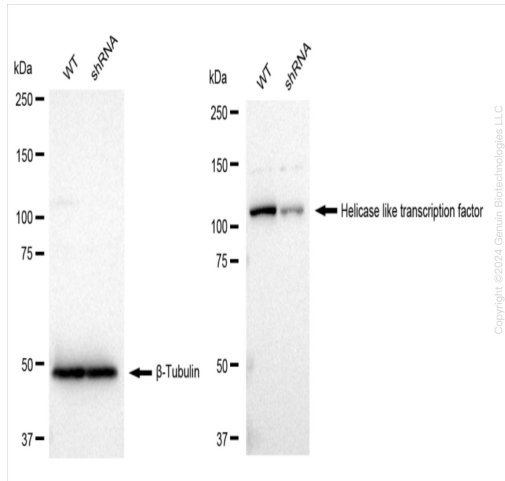
### HLTF Human Knockdown Lysate

#### Product data:

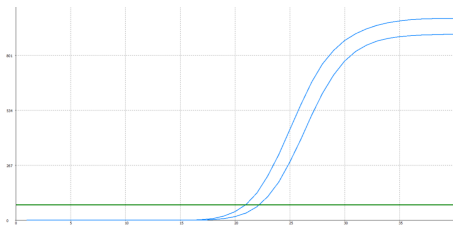
Product Type:	Knockdown Lysates
Description:	WB-validated HLTF Knockdown HeLa Cell Lysate
Species:	Human
Expression Host:	HeLa
Tag:	Tag Free
Synonyms:	HLTF; Helicase Like Transcription Factor; HIP116A; RNF80; SMARCA3; SNF2L3; HLTF1; SWI/SNF Related, Matrix Associated, Actin Dependent Regulator Of Chromatin, Subfamily A, Member 3; SWI/SNF-Related Matrix-Associated Actin-Dependent Regulator Of Chromatin Subfamily A Member 3; RING-Type E3 Ubiquitin Transferase HLTF; Sucrose Nonfermenting Protein 2-Like 3; Helicase-Like Transcription Factor; RING Finger Protein 80; HIP116; ZBU1; DNA-Binding Protein/Plasminogen Activator Inhibitor-1 Regulator; DNA-Binding Protein/Plasminogen Activator Inhibitor 1 Regulator; Sucrose Nonfermenting-Like 3; SNF2-Like 3; EC 2.3.2.27; EC 3.6.4.-; EC 3.6.1
Predicted MW:	114 kDa
Components:	1 vial of 100 ug WT HeLa cell lysate 1 vial of 100 ug HLTF KD HeLa cell lysate
Storage:	Store at -20 °C for two years.
Concentration:	Lot-specific
Buffer:	IntactProtein Cell-Tissue Lysis buffer
Locus ID:	6596
UniProt ID:	<a href="#">Q14527</a>
Protein Families:	Druggable Genome, Transcription Factors


[View online »](#)

## Product images:



Western blotting analysis. HLTF protein expression in wild-type (WT) and shRNA knockdown (KD) HeLa cells was detected using Western blotting.  $\beta$ -Tubulin served as a loading control. The blots were incubated with primary antibodies (Cat#61467, 1:5,000) against HLTF and  $\beta$ -Tubulin, respectively, followed by incubating with HRP-conjugated goat anti-rabbit secondary antibody (Cat#201, 1:20,000). Images were developed using FeQ™ ECL Substrate Kit (Cat#226).



Genotype	Ct Value
Wild-Type	20.8
Knock-Down	21.94
$\Delta$ Ct (Ct <sub>KD</sub> -Ct <sub>WT</sub> )	1.14
% mRNA Reduction	↓ 55%

RT-qPCR analysis. HeLa cells were infected with HLTF-specific shRNA lentiviral particles, total RNA was extracted from wild-type and knockdown cells, RT-qPCR was performed using gene-specific primers.  $\Delta$ Ct (Ct<sub>KD</sub>-Ct<sub>WT</sub>) was used to calculate mRNA reduction (%) between wild-type and knockdown cells using the following formula:  $(1 - 1/2^{\Delta\text{Ct}}) \times 100\%$ .