

Product datasheet for **LY300194**

HAT1 Human Knockdown Lysate

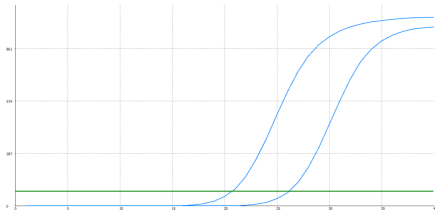
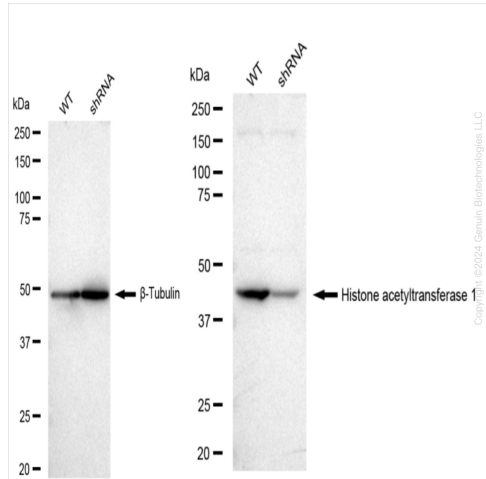
Product data:

Product Type:	Knockdown Lysates
Description:	WB-validated HAT1 Knockdown HeLa Cell Lysate
Species:	Human
Expression Host:	HeLa
Tag:	Tag Free
Synonyms:	HAT1; Histone Acetyltransferase 1; KAT1; Histone Acetyltransferase Type B Catalytic Subunit; EC 2.3.1.48
Predicted MW:	50 kDa
Components:	1 vial of 100 ug WT HeLa cell lysate 1 vial of 100 ug HAT1 KD HeLa cell lysate
Storage:	Store at -20 °C for two years.
Concentration:	Lot-specific
Buffer:	IntactProtein Cell-Tissue Lysis buffer
Locus ID:	8520
UniProt ID:	<u>O14929</u>
Protein Families:	Druggable Genome



[View online »](#)

Product images:



Genotype	Ct Value
Wild-Type	20.53
Knock-Down	25.91
ΔCt ($Ct_{KD} - Ct_{WT}$)	5.38
% mRNA Reduction	↓ 98%

RT-qPCR analysis. HeLa cells were infected with HAT1-specific shRNA lentiviral particles, total RNA was extracted from wild-type and knockdown cells, RT-qPCR was performed using gene-specific primers. ΔCt ($Ct_{KD} - Ct_{WT}$) was used to calculate mRNA reduction (%) between wild-type and knockdown cells using the following formula: $(1 - 1/2^{\Delta Ct}) \times 100\%$.