

Product datasheet for **LY300193**

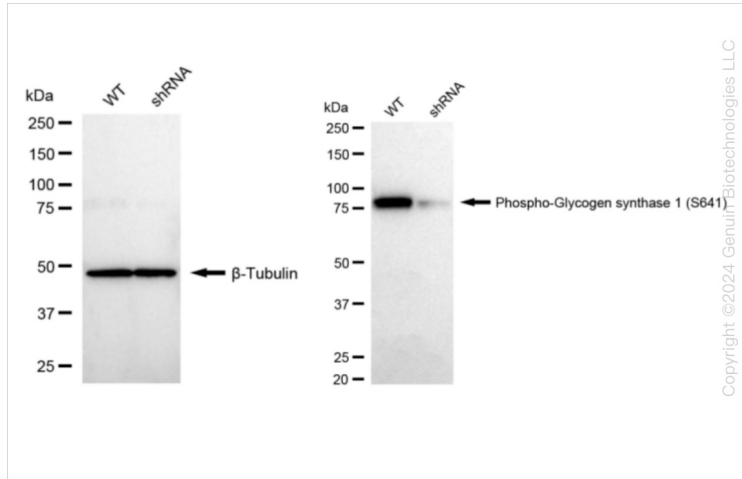
Glycogen synthase 1 (GYS1) Human Knockdown Lysate

Product data:

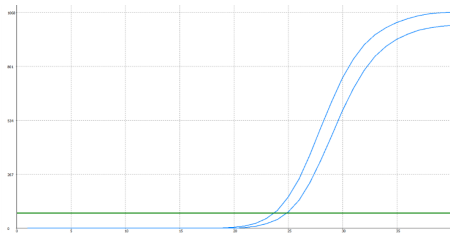
Product Type:	Knockdown Lysates
Description:	WB-validated GYS1 Knockdown HeLa Cell Lysate
Species:	Human
Expression Host:	HeLa
Tag:	Tag Free
Synonyms:	GYS1; Glycogen Synthase 1; GSY; GYS; Glycogen [Starch] Synthase, Muscle; Glycogen Synthase 1 (Muscle); EC 2.4.1.11
Predicted MW:	84 kDa
Components:	1 vial of 100 ug WT HeLa cell lysate 1 vial of 100 ug GYS1 KD HeLa cell lysate
Storage:	Store at -20 °C for two years.
Concentration:	Lot-specific
Buffer:	IntactProtein Cell-Tissue Lysis buffer
Locus ID:	2997
UniProt ID:	P13807
Protein Pathways:	Insulin signaling pathway, Starch and sucrose metabolism

[View online »](#)

Product images:



Western blotting analysis. GYS1 protein expression in wild-type (WT) and shRNA knockdown (KD) HeLa cells was detected using Western blotting. β -Tubulin served as a loading control. The blots were incubated with primary antibodies against GYS1 and β -Tubulin, respectively, followed by incubating with HRP-conjugated goat anti-rabbit secondary antibody. Images were developed using FeQ™ ECL Substrate Kit.



Genotype	Ct Value
Wild-Type	23.70
Knock-Down	24.74
Δ Ct (Ct _{KD} -Ct _{WT})	1.04
% mRNA Reduction	↓ 51%

Copyright ©2024 Genun Biotechnologies LLC

RT-qPCR analysis. HeLa cells were infected with GYS1-specific shRNA lentiviral particles, total RNA was extracted from wild-type and knockdown cells, RT-qPCR was performed using gene-specific primers. Δ Ct (CtKD-CtWT) was used to calculate mRNA reduction (%) between wild-type and knockdown cells using the following formula: $(1 - 1/2^{\Delta\text{Ct}}) \times 100\%$.