

## Product datasheet for **LY300172**

### **p66 alpha (GATAD2A) Human Knockdown Lysate**

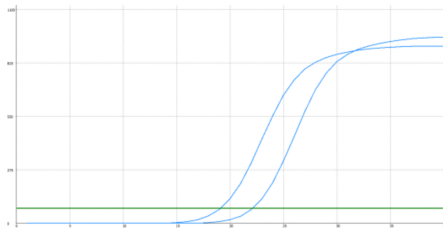
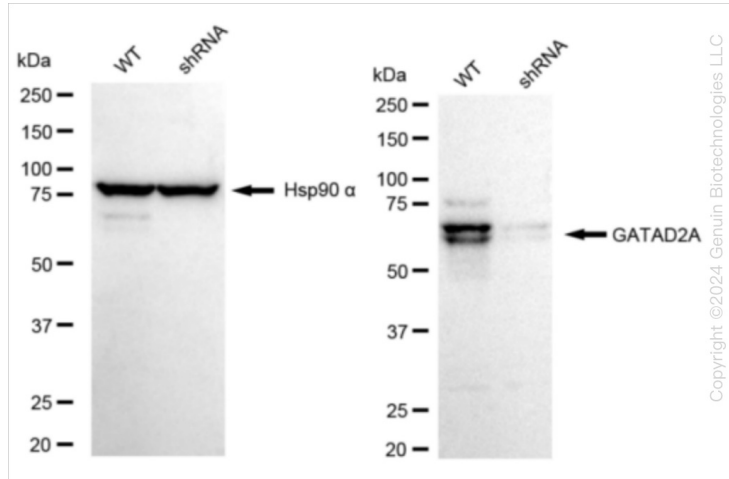
#### **Product data:**

Product Type:	Knockdown Lysates
Description:	WB-validated GATAD2A Knockdown HeLa Cell Lysate
Species:	Human
Expression Host:	HeLa
Tag:	Tag Free
Synonyms:	GATAD2A; GATA Zinc Finger Domain Containing 2A; GATA Zinc Finger Domain-Containing Protein 2A; Transcriptional Repressor P66-Alpha; P66alpha; P66 Alpha; Hp66alpha; P66ALPHA
Predicted MW:	68 kDa
Components:	1 vial of 100 ug WT HeLa cell lysate 1 vial of 100 ug GATAD2A KD HeLa cell lysate
Storage:	Store at -20 °C for two years.
Concentration:	Lot-specific
Buffer:	IntactProtein Cell-Tissue Lysis buffer
Locus ID:	54815
UniProt ID:	<a href="#">Q86YP4</a>
Protein Families:	Transcription Factors



[View online »](#)

## Product images:



Genotype	Ct Value
Wild-Type	18.81
Knock-Down	21.92
$\Delta Ct (Ct_{KD} - Ct_{WT})$	3.11
% mRNA Reduction	↓ 88%

Copyright ©2024 Genuin Biotechnologies LLC

Western blotting analysis. GATAD2A protein expression in wild-type (WT) and shRNA knockdown (KD) HeLa cells was detected using Western blotting. Hsp90 α served as a loading control. The blots were incubated with primary antibodies against GATAD2A and Hsp90 α, respectively, followed by incubating with HRP-conjugated goat anti-rabbit secondary antibody. Images were developed using FeQ™ ECL Substrate Kit.

RT-qPCR analysis. HeLa cells were infected with GATAD2A-specific shRNA lentiviral particles, total RNA was extracted from wild-type and knockdown cells, RT-qPCR was performed using gene-specific primers.  $\Delta Ct (Ct_{KD} - Ct_{WT})$  was used to calculate mRNA reduction (%) between wild-type and knockdown cells using the following formula:  $(1 - 1/2^{\Delta Ct}) \times 100\%$ .