

Product datasheet for **LY300165**

Flotillin 1 (FLOT1) Human Knockdown Lysate

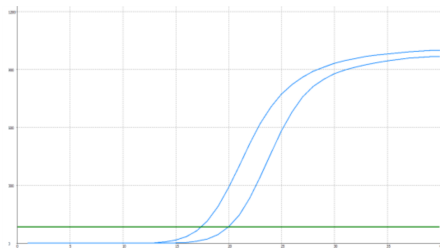
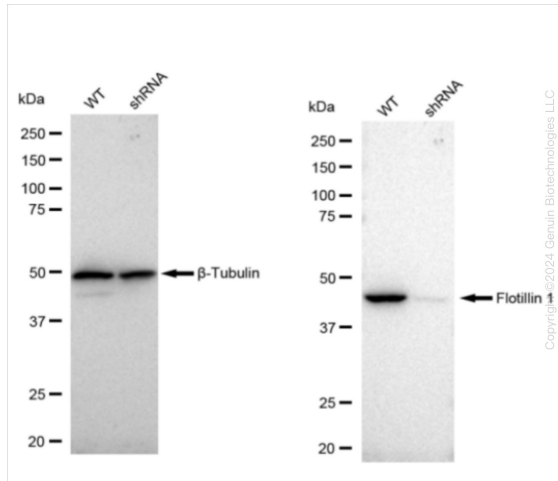
Product data:

Product Type:	Knockdown Lysates
Description:	WB-validated FLOT1 Knockdown HeLa Cell Lysate
Species:	Human
Expression Host:	HeLa
Tag:	Tag Free
Synonyms:	FLOT1; Flotillin 1; flotillin-1; Integral Membrane Component Of Caveolae
Predicted MW:	47 kDa
Components:	1 vial of 100 ug WT HeLa cell lysate 1 vial of 100 ug FLOT1 KD HeLa cell lysate
Storage:	Store at -20 °C for two years.
Concentration:	Lot-specific
Buffer:	IntactProtein Cell-Tissue Lysis buffer
Locus ID:	10211
UniProt ID:	Q75955
Protein Pathways:	Insulin signaling pathway



[View online »](#)

Product images:



Genotype	Ct Value
Wild-Type	17.11
Knock-Down	19.61
Δ Ct (Ct _{KD} -Ct _{WT})	2.5
% mRNA Reduction	↓ 82%

RT-qPCR analysis. HeLa cells were infected with FLOT1-specific shRNA lentiviral particles, total RNA was extracted from wild-type and knockdown cells, RT-qPCR was performed using gene-specific primers. Δ Ct (Ct_{KD}-Ct_{WT}) was used to calculate mRNA reduction (%) between wild-type and knockdown cells using the following formula: $(1 - 1/2^{\Delta\text{Ct}}) \times 100\%$.