

Product datasheet for **LY300040**

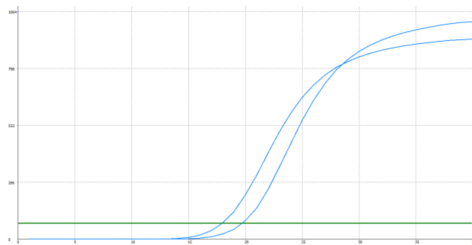
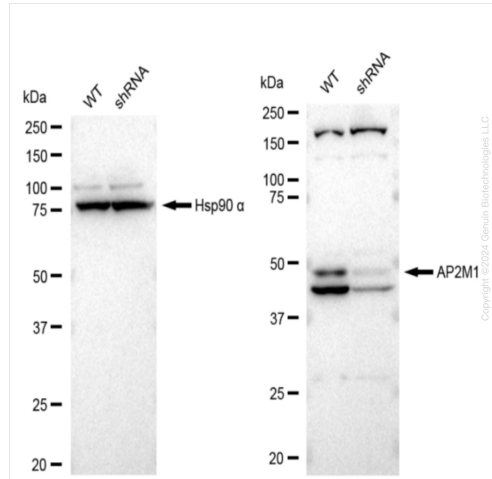
AP2M1 Human Knockdown Lysate

Product data:

Product Type:	Knockdown Lysates
Description:	WB-validated AP2M1 Knockdown HeLa Cell Lysate
Species:	Human
Expression Host:	HeLa
Tag:	Tag Free
Synonyms:	AP2M1; Adaptor Related Protein Complex 2 Subunit Mu 1; CLAPM1; AP50; Clathrin-Associated/Assembly/Adaptor Protein, Medium 1; Clathrin Assembly Protein Complex 2 Mu Medium Chain; Clathrin Assembly Protein Complex 2 Medium Chain; Adaptor Related Protein Complex 2 Mu 1 Subunit; Adaptor-Related Protein Complex 2 Subunit Mu; Plasma Membrane Adaptor AP-2 50 KDa Protein; Plasma Membrane Adaptor AP-2 50kDA Protein; Clathrin Adaptor Complex AP2, Mu Subunit; Adaptor Protein Complex AP-2 Subunit Mu; Clathrin Coat-Associated Protein AP50; Clathrin Coat Assembly Protein AP50; Clathrin Coat Adaptor Protein AP50; AP-2 Complex Subunit Mu; HA2 50 KDA Subunit; AP-2 Mu 2 Chain; Adaptin-Mu2; Mu2; HA2 50 KDa Subunit; AP-2 Mu Chain; KIAA0109; MRD60; MU2
Predicted MW:	50 kDa
Components:	1 vial of 100 ug WT HeLa cell lysate 1 vial of 100 ug AP2M1 KD HeLa cell lysate
Storage:	Store at -20 °C for two years.
Concentration:	Lot-specific
Buffer:	IntactProtein Cell-Tissue Lysis buffer
Locus ID:	1173
UniProt ID:	Q96CW1
Protein Families:	Druggable Genome
Protein Pathways:	Endocytosis, Huntington's disease


[View online »](#)

Product images:



Genotype	Ct Value
Wild-Type	17.78
Knock-Down	19.66
$\Delta Ct (Ct_{KD} - Ct_{WT})$	1.88
% mRNA Reduction	↓ 73%

RT-qPCR analysis. HeLa cells were infected with AP2M1-specific shRNA lentiviral particles, total RNA was extracted from wild-type and knockdown cells, RT-qPCR was performed using gene-specific primers. $\Delta Ct (Ct_{KD} - Ct_{WT})$ was used to calculate mRNA reduction (%) between wild-type and knockdown cells using the following formula: $(1 - 1/2^{\Delta Ct}) \times 100\%$.