

Product datasheet for **LY300018**

Centaurin beta 2 (ACAP2) Human Knockdown Lysate

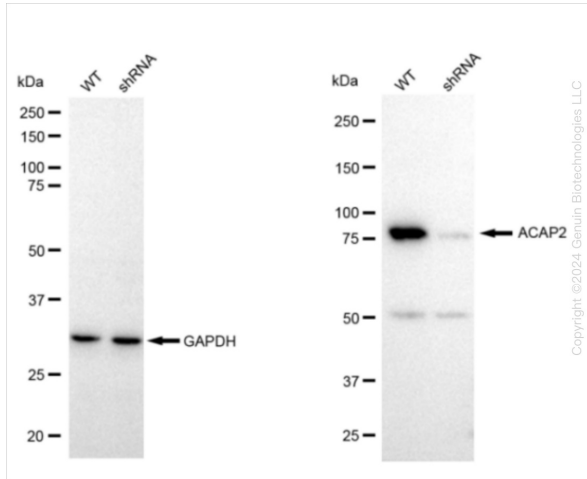
Product data:

Product Type:	Knockdown Lysates
Description:	WB-validated ACAP2 Knockdown HeLa Cell Lysate
Species:	Human
Expression Host:	HeLa
Tag:	Tag Free
Synonyms:	ACAP2; ArfGAP With Coiled-Coil, Ankyrin Repeat And PH Domains 2; KIAA0041; CNT-B2; CENTB2; Arf-GAP With Coiled-Coil, ANK Repeat And PH Domain-Containing Protein 2; Centaurin-Beta-2; Arf GAP With Coiled Coil, ANK Repeat And PH Domains 2; Centaurin, Beta 2; Cnt-B2
Predicted MW:	88 kDa
Components:	1 vial of 100 ug WT HeLa cell lysate 1 vial of 100 ug ACAP2 KD HeLa cell lysate
Storage:	Store at -20 °C for two years.
Concentration:	Lot-specific
Buffer:	IntactProtein Cell-Tissue Lysis buffer
Locus ID:	23527
UniProt ID:	Q15057
Protein Pathways:	Endocytosis

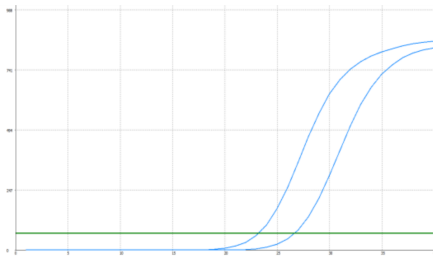


[View online »](#)

Product images:



Western blotting analysis. ACAP2 protein expression in wild-type (WT) and shRNA knockdown (KD) HeLa cells was detected using Western blotting. GAPDH served as a loading control. The blots were incubated with primary antibodies against ACAP2 and GAPDH, respectively, followed by incubating with HRP-conjugated goat anti-rabbit secondary antibody. Images were developed using FeQ™ ECL Substrate Kit.



Genotype	Ct Value
Wild-Type	23.03
Knock-Down	26.37
$\Delta Ct (Ct_{KD} - Ct_{WT})$	3.34
% mRNA Reduction	↓ 90%

RT-qPCR analysis. HeLa cells were infected with ACAP2-specific shRNA lentiviral particles, total RNA was extracted from wild-type and knockdown cells, RT-qPCR was performed using gene-specific primers. $\Delta Ct (Ct_{KD} - Ct_{WT})$ was used to calculate mRNA reduction (%) between wild-type and knockdown cells using the following formula: $(1 - 1/2^{\Delta Ct}) \times 100\%$.