

Product datasheet for **LY300017**

ACADVL Human Knockdown Lysate

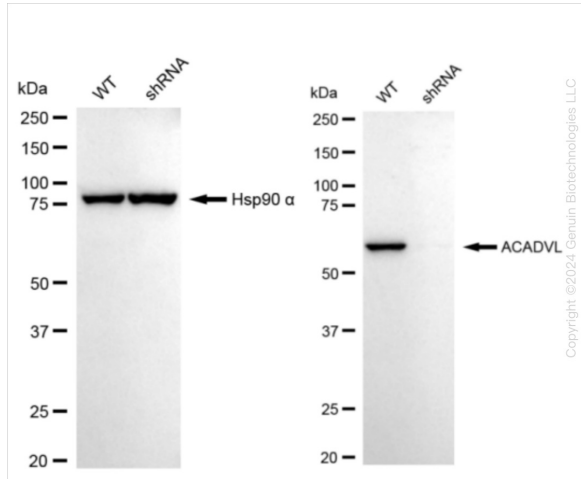
Product data:

Product Type:	Knockdown Lysates
Description:	WB-validated ACADVL Knockdown HeLa Cell Lysate
Species:	Human
Expression Host:	HeLa
Tag:	Tag Free
Synonyms:	ACADVL; Acyl-CoA Dehydrogenase Very Long Chain; VLCAD; LCACD; ACAD6; Very Long-Chain Specific Acyl-CoA Dehydrogenase, Mitochondrial; Acyl-Coenzyme A Dehydrogenase, Very Long Chain; EC 1.3.8.9; EC 1.3.99
Predicted MW:	70 kDa
Components:	1 vial of 100 ug WT HeLa cell lysate 1 vial of 100 ug ACADVL KD HeLa cell lysate
Storage:	Store at -20 °C for two years.
Concentration:	Lot-specific
Buffer:	IntactProtein Cell-Tissue Lysis buffer
Locus ID:	37
UniProt ID:	P49748
Protein Families:	Druggable Genome
Protein Pathways:	Fatty acid metabolism, Metabolic pathways

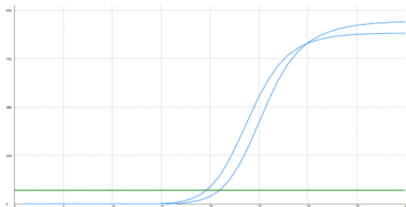


[View online »](#)

Product images:



Western blotting analysis. ACADVL protein expression in wild-type (WT) and shRNA knockdown (KD) HeLa cells was detected using Western blotting. Hsp90 α served as a loading control. The blots were incubated with primary antibodies against ACADVL and Hsp90 α, respectively, followed by incubating with HRP-conjugated goat anti-rabbit secondary antibody. Images were developed using FeQ™ ECL Substrate Kit.



Genotype	Ct Value
Wild-Type	19.39
Knock-Down	20.87
ΔCt ($Ct_{KD} - Ct_{WT}$)	1.48
% mRNA Reduction	↓ 64%

Copyright ©2024 Genuin Biotechnologies LLC

RT-qPCR analysis. HeLa cells were infected with ACADVL-specific shRNA lentiviral particles, total RNA was extracted from wild-type and knockdown cells, RT-qPCR was performed using gene-specific primers. ΔCt ($Ct_{KD} - Ct_{WT}$) was used to calculate mRNA reduction (%) between wild-type and knockdown cells using the following formula: $(1 - 1/2^{\Delta Ct}) \times 100\%$.