

Product datasheet for **LY300005**

HSP90AB1 Human Knockdown Lysate

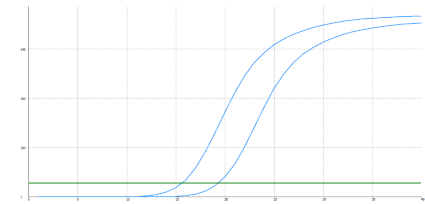
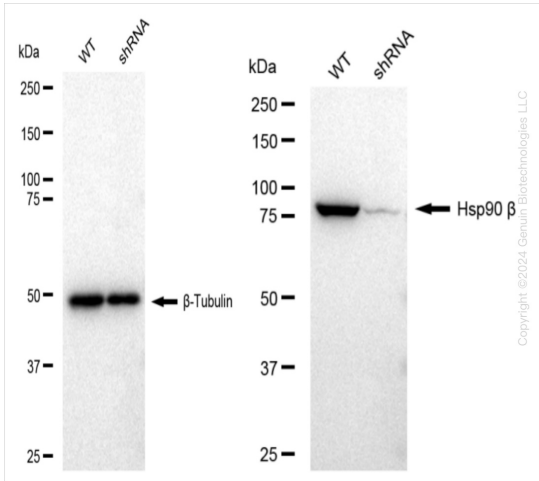
Product data:

Product Type:	Knockdown Lysates
Description:	WB-validated HSP90AB1 Knockdown 293T Cell Lysate
Species:	Human
Expression Host:	293T
Tag:	Tag Free
Synonyms:	HSP90AB1; Heat Shock Protein 90 Alpha Family Class B Member 1; HSPC2; HSPCB; Heat Shock Protein 90kDa Alpha (Cytosolic), Class B Member 1; Heat Shock 90kD Protein 1, Beta; Heat Shock Protein HSP 90-Beta; Heat Shock 84 KDa; HSP90B; HSP84; Heat Shock Protein 90kDa Alpha Family Class B Member 1; Heat Shock 90kDa Protein 1, Beta; Heat Shock Protein 90 KDa; HSP90-Beta; D6S182; HSP 90; HSP 84
Predicted MW:	83 kDa
Components:	1 vial of 100 ug WT 293T cell lysate 1 vial of 100 ug HSP90AB1 KD 293T cell lysate
Storage:	Store at -20 °C for two years.
Concentration:	Lot-specific
Buffer:	IntactProtein Cell-Tissue Lysis buffer
Locus ID:	3326
UniProt ID:	<u>P08238</u>
Protein Families:	Druggable Genome, Stem cell - Pluripotency
Protein Pathways:	Antigen processing and presentation, NOD-like receptor signaling pathway, Pathways in cancer, Progesterone-mediated oocyte maturation, Prostate cancer



[View online »](#)

Product images:



Genotype	Ct Value
Wild-Type	15.47
Knock-Down	19.14
$\Delta Ct (Ct_{KD} - Ct_{WT})$	3.67
% mRNA Reduction	↓ 92%

Western blotting analysis. HSP90AB1 protein expression in wild-type (WT) and shRNA knockdown (KD) 293T cells was detected using Western blotting. β -Tubulin served as a loading control. The blots were incubated with primary antibodies against HSP90AB1 and β -Tubulin, respectively, followed by incubating with HRP-conjugated goat anti-rabbit secondary antibody. Images were developed using FeQ™ ECL Substrate Kit.

RT-qPCR analysis. 293T cells were infected with HSP90AB1-specific shRNA lentiviral particles, total RNA was extracted from wild-type and knockdown cells, RT-qPCR was performed using gene-specific primers. $\Delta Ct (Ct_{KD} - Ct_{WT})$ was used to calculate mRNA reduction (%) between wild-type and knockdown cells using the following formula: $(1 - 1/2^{\Delta Ct}) \times 100\%$.