

Product datasheet for **LVRT101**

TissueScan, Liver Cancer cDNA Array I

Product data:

Product Type:	TissueScan
Array Category:	Cancer Specific
Clinical Info:	/assets/documents/tissuescan/lvrt101.xls
Diagnosis Category:	Liver Cancer
Tissue:	Liver
Array Name:	Liver Cancer cDNA Array I

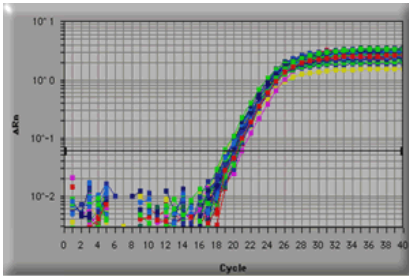
Product images:



TissueScan product image.

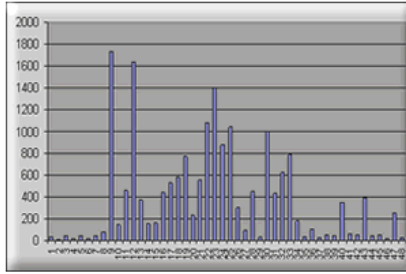


[View online »](#)



A Human Liver Cancer real time PCR Gene Expression panel used in real-time PCR. The beta-actin contents in the 48 human cDNAs were detected using SYBR Green I protocol and performed in PE7700.

Fluorescence reading - cycle number.



A Human Liver Cancer real time PCR Gene Expression panel was used in SYBR Green I based real-time PCR. The expression profile of the human Survivin transcript (ACCN#: NM_001168) was detected using SYBR Green I protocol and performed in PE7700.

Normalized relative expression among 48 Liver samples