

Product datasheet for **LC427121**

SHC (SHC1) (NM_001130040) Human Over-expression Lysate

Product data:

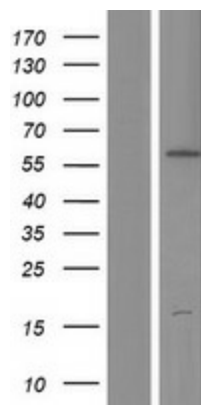
Product Type:	Over-expression Lysates
Description:	SHC1 HEK293T cell transient overexpression lysate (as WB positive control)
Species:	Human
Expression Host:	HEK293T
Expression cDNA Clone or AA Sequence:	TrueORF Clone RC225982
Tag:	C-Myc/DDK
Detection Antibodies:	Clone OTI4C5, Anti-DDK (FLAG) monoclonal antibody (TA50011-100)
ACCN:	NM_001130040 , NP_001123512
Synonyms:	SHC; SHCA
Predicted MW:	62.7 kDa
Components:	1 vial of 20 ug lyophilized gene specific transient over-expression cell lysate
Storage:	The lysate can be shipped at ambient temperature. Upon receiving, store the sample at -20°C. Lysate samples can be reconstituted with SDS Sample Buffer. Avoid repeated freeze-thaw cycles after reconstitution. Lysate samples are stable for 12 months from date of receipt when stored at -20°C.
Preparation:	HEK293T cells in 10-cm dishes were transiently transfected with MegaTran Transfection Reagent (TT200002) and 5ug TrueORE cDNA plasmid. Transfected cells were cultured for 48hrs before collection. The cells were lysed in modified RIPA buffer (25mM Tris-HCl pH7.6, 150mM NaCl, 1% NP-40, 1mM EDTA, 1xProteinase inhibitor cocktail mix (Sigma), 1mM PMSF and 1mM Na3VO4), and then centrifuged to clarify the lysate. Protein concentration was measured by BCA kit (Thermo Scientific Inc.). To facilitate transportation and protein, the products are supplied as lyophilized proteins.
RefSeq:	NP_001123512
Locus ID:	6464
Cytogenetics:	1q21.3
Protein Families:	Druggable Genome



[View online »](#)

Protein Pathways:

Adherens junction, Arrhythmogenic right ventricular cardiomyopathy (ARVC), Chemokine signaling pathway, Chronic myeloid leukemia, Dilated cardiomyopathy, ErbB signaling pathway, Focal adhesion, Glioma, Hypertrophic cardiomyopathy (HCM), Insulin signaling pathway, Leukocyte transendothelial migration, Natural killer cell mediated cytotoxicity, Neurotrophin signaling pathway, Pathogenic Escherichia coli infection, Regulation of actin cytoskeleton, Tight junction, Vibrio cholerae infection, Viral myocarditis

Product images:

Western blot validation of overexpression lysate (Cat# [LY427121]) using anti-DDK antibody (Cat# [TA50011-100]). Left: Cell lysates from untransfected HEK293T cells; Right: Cell lysates from HEK293T cells transfected with [RC225982] using transfection reagent MegaTran 2.0 (Cat# [TT210002]).