

## Product datasheet for **LC401382**

### **B Raf (BRAF) (NM\_004333) Human Over-expression Lysate**

#### **Product data:**

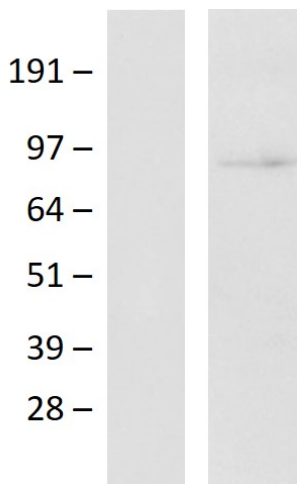
<b>Product Type:</b>	Over-expression Lysates
<b>Description:</b>	BRAF HEK293T cell transient overexpression lysate (as WB positive control)
<b>Species:</b>	Human
<b>Expression Host:</b>	HEK293T
<b>Expression cDNA Clone or AA Sequence:</b>	TrueORF Clone RC211013
<b>Tag:</b>	C-Myc/DDK
<b>Detection Antibodies:</b>	Clone OTI4C5, Anti-DDK (FLAG) monoclonal antibody (TA50011-100)
<b>ACCN:</b>	<a href="#">NM_004333</a> , <a href="#">NP_004324</a>
<b>Synonyms:</b>	B-raf; B-RAF1; BRAF1; NS7; RAFB1
<b>Predicted MW:</b>	84.4 kDa
<b>Components:</b>	1 vial of 20 ug lyophilized gene specific transient over-expression cell lysate
<b>Storage:</b>	The lysate can be shipped at ambient temperature. Upon receiving, store the sample at -20°C. Lysate samples can be reconstituted with SDS Sample Buffer. Avoid repeated freeze-thaw cycles after reconstitution. Lysate samples are stable for 12 months from date of receipt when stored at -20°C.
<b>Preparation:</b>	HEK293T cells in 10-cm dishes were transiently transfected with <a href="#">MegaTran</a> Transfection Reagent (TT200002) and 5ug <a href="#">TrueORE</a> cDNA plasmid. Transfected cells were cultured for 48hrs before collection. The cells were lysed in modified RIPA buffer (25mM Tris-HCl pH7.6, 150mM NaCl, 1% NP-40, 1mM EDTA, 1xProteinase inhibitor cocktail mix (Sigma), 1mM PMSF and 1mM Na3VO4), and then centrifuged to clarify the lysate. Protein concentration was measured by BCA kit (Thermo Scientific Inc.). To facilitate transportation and protein, the products are supplied as lyophilized proteins.
<b>RefSeq:</b>	<a href="#">NP_004324</a>
<b>Locus ID:</b>	673
<b>Cytogenetics:</b>	7q34
<b>Protein Families:</b>	Druggable Genome, Protein Kinase



[View online »](#)

**Protein Pathways:**

Acute myeloid leukemia, Bladder cancer, Chemokine signaling pathway, Chronic myeloid leukemia, Colorectal cancer, Endometrial cancer, ErbB signaling pathway, Focal adhesion, Glioma, Insulin signaling pathway, Long-term depression, Long-term potentiation, MAPK signaling pathway, Melanoma, mTOR signaling pathway, Natural killer cell mediated cytotoxicity, Neurotrophin signaling pathway, Non-small cell lung cancer, Pancreatic cancer, Pathways in cancer, Progesterone-mediated oocyte maturation, Prostate cancer, Regulation of actin cytoskeleton, Renal cell carcinoma, Thyroid cancer, Vascular smooth muscle contraction

**Product images:**

Western blot validation of overexpression lysate (Cat# [LY401382]) using anti-DDK antibody (Cat# [TA592569]). Left: Cell lysates from untransfected HEK293T cells; Right: Cell lysates from HEK293T cells transfected with [RC211013] using transfection reagent PEI.