

## Product datasheet for **HORT301**

### TissueScan, Ovarian Cancer cDNA Array I

#### Product data:

Product Type:	TissueScan
Array Category:	Cancer Specific
Clinical Info:	/assets/documents/tissuescan/hort301.xls
Diagnosis:	Ovarian Cancer
Tissue:	Ovary
Array Name:	Ovarian Cancer cDNA Array I

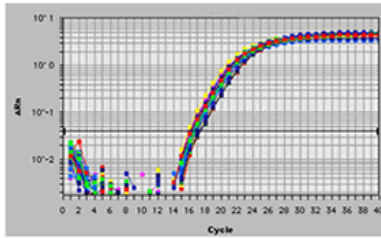
#### Product images:



TissueScan product image.

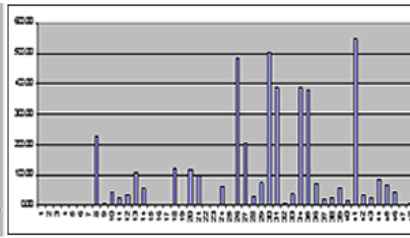


[View online »](#)



A Human Ovarian Cancer real time PCR Gene Expression panel was used in real-time PCR. The beta-actin contents in the 48 human cDNAs were detected using SYBR Green I protocol and performed on a PE7700.

Fluorescence reading - cycle number



A Human Ovarian Cancer real time PCR Gene Expression panel was used in SYBR Green I based real time PCR. The expression profile of human KLK8 gene (NM\_007196) was detected using SYBR Green I protocol and performed on a PE7700.

Normalized relative expression among 48 ovarian samples