

Product datasheet for **HLRT502**

TissueScan, Lung Cancer cDNA Array II

Product data:

Product Type:	TissueScan
Array Category:	Cancer Specific
Clinical Info:	/assets/documents/tissuescan/hlrt502.xls
Diagnosis:	Lung Cancer
Tissue:	Lung
Array Name:	Lung Cancer cDNA Array II

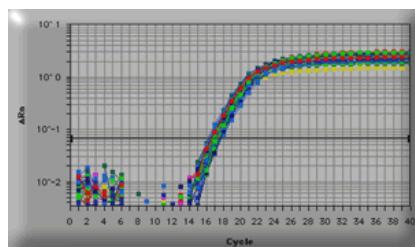
Product images:



TissueScan product image.

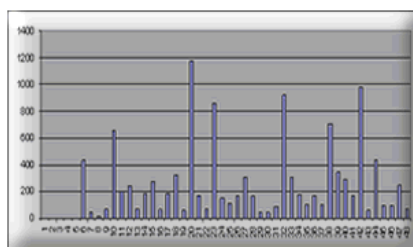


[View online »](#)



A human lung real time PCR Gene Expression panel used in real time PCR. The beta-actin contents in the 48 human cDNAs were detected using SYBR Green I protocol and performed in a PE7700 .

Fluorescence reading - cycle number



A human lung real time PCR Gene Expression panel used in SYBR Green based real time PCR. The expression profile of the human Survivin (NM_001168) was detected using SYBR Green I protocol and performed in a PE7700 .

Normalized relative expression among 48 lung samples